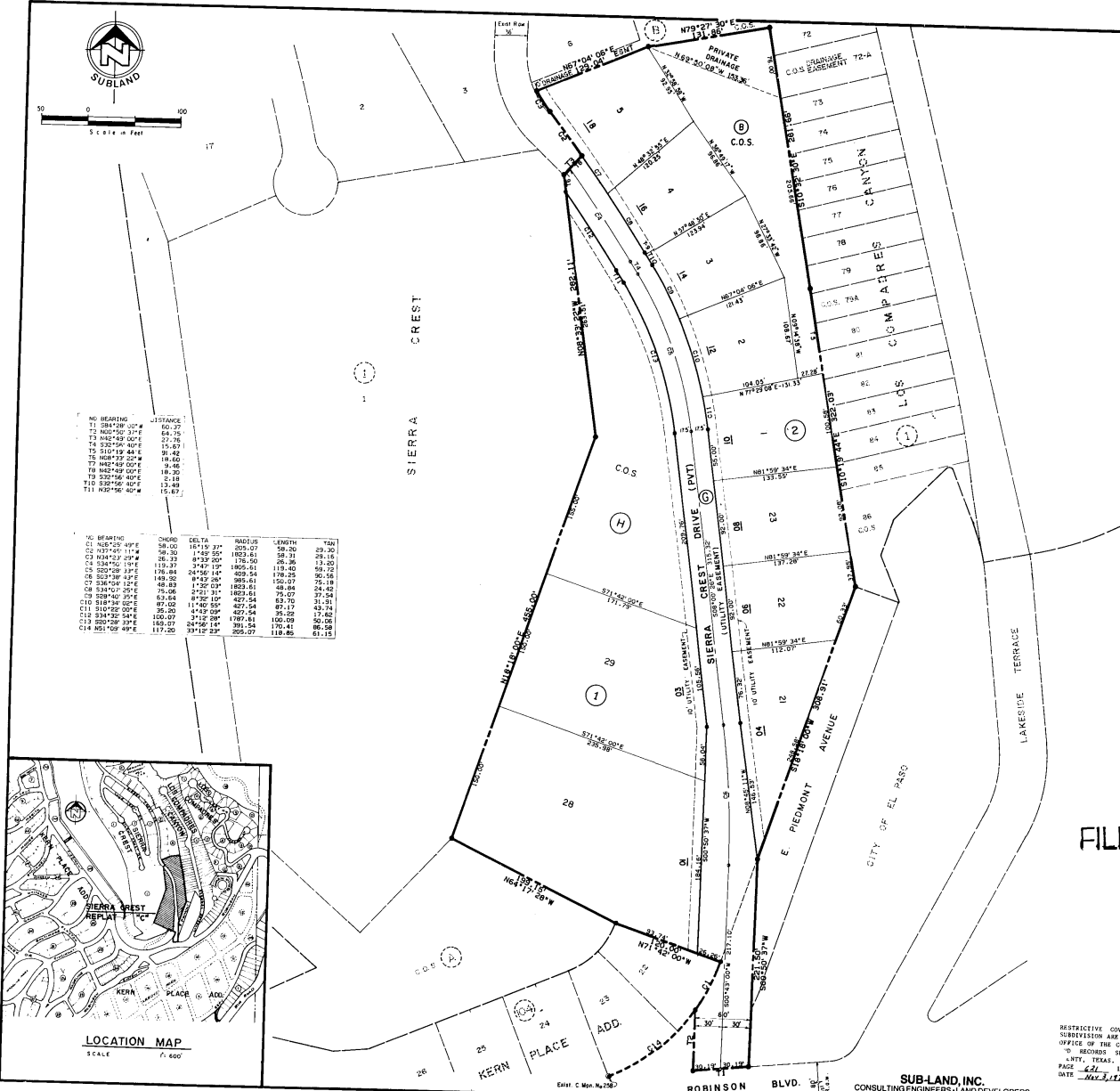
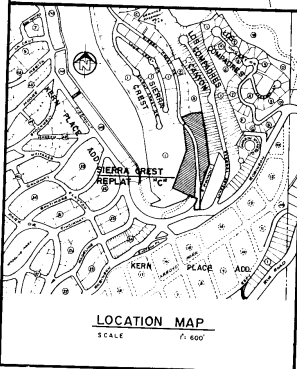




Scale in Feet
0 100

NO	BEARING	DISTANCE
71	S84°59'00"W	60.27
72	N02°50'37"E	64.75
73	N02°48'00"E	21.76
74	S22°56'00"E	15.87
75	S10°18'00"E	39.42
76	N08°33'00"W	18.60
77	N02°48'00"E	9.46
78	N02°48'00"E	18.30
79	S22°56'00"E	2.18
80	S02°18'00"E	13.49
81	N02°56'00"W	15.87

NO	BEARING	CHORD	DELT A	ORDINATE	LENGTH	AREA
01	N85°25'00"E	58.00	16°11'37"	205.07	58.20	29.30
02	S23°45'11"W	58.30	1°05'55"	103.52	58.31	29.16
03	N04°02'00"W	35.33	8°33'20"	176.50	28.36	12.50
04	S24°50'00"E	112.37	2°47'15"	190.51	112.40	52.00
05	S02°50'00"E	176.88	24°56'14"	408.54	176.25	26.56
06	S04°00'00"E	182.30	8°45'00"	385.61	182.07	27.18
07	S04°00'00"E	48.89	1°22'03"	183.81	48.84	24.42
08	S34°07'25"E	75.04	8°22'11"	132.51	75.07	37.54
09	S04°00'00"E	75.04	8°22'11"	132.51	75.07	37.54
10	S18°34'00"E	87.82	11°40'55"	147.54	87.70	31.91
11	S02°50'00"E	35.30	1°05'55"	62.28	35.29	17.44
12	S34°07'25"E	100.07	3°12'28"	178.81	100.00	50.58
13	S02°50'00"E	150.07	24°56'14"	331.54	150.00	86.58
14	N01°02'49"E	117.20	33°12'23"	205.07	117.85	61.18



SIERRA CREST REPLAT "C"

BEING A REPLAT OF A PORTION OF LOTS 79 THROUGH 86, BLOCK 1, LOS COMPARTES CANYON AND VACATED PORTIONS OF UPPER NYE LAKE, AND EAST PIEDMONT AVENUE, KERN PLACE ADDITION, AND ALL OF C.O.S. A, B AND G, AND A PORTION OF BLOCK 2, SIERRA CREST REPLAT "A" AND PORTION OF C.O.S. G, SIERRA CREST, CITY OF EL PASO, EL PASO COUNTY, TEXAS.

Containing: 624469 Ac.
RESERVATION

STATE OF TEXAS
COUNTY OF EL PASO

CONCRETE/TAJAH CONSTRUCTION COMPANY, INC., and SIERRA CREST HOMEOWNERS ASSOCIATION, INC., hereby present this replat and dedicate the private streets for use as utility easements and also all other utility easements as herein laid down and designated including easements for conduits, and pipes for underground utilities and buried service wires, access for service and construction of the land are designated as private drives and alleys, certain areas intended for use by the homeowners in the addition for common open spaces and the right to trim interfering trees, shrubs and vines, and other related activities. Accordingly, said easements are reserved for the common use and enjoyment of homeowners in SIERRA CREST SUBDIVISION, in accordance with the Declaration of Homeowners' Conduits, Cables, and Utilities, 1976, and which, in this replat, are incorporated herein and made a part of this plat.

Restrictive Covenants for this subdivision were filed November 3, 1976, in Book 733, at Page 621, Instrument 10736.

BY: *[Signature]* CONCRETE/TAJAH CONSTRUCTION COMPANY, INC.
[Signature] SIERRA CREST HOMEOWNERS ASSOCIATION, INC.

BY: *[Signature]* SIERRA CREST HOMEOWNERS ASSOCIATION, INC.

STATE OF TEXAS
COUNTY OF EL PASO

I, *[Signature]*, Notary Public in and for El Paso County, Texas, My Commission Expires 2/1/82.

CITY PLAN COMMISSION

This subdivision is hereby approved as to the platting and as to the conditions of the dedication in accordance with Article 20A of Vernon's Texas Civil Statutes this 24th day of November, 1978.

[Signature] City Clerk
[Signature] City Engineer

APPROVED FOR FILING THIS 3rd DAY OF AUGUST, 1978.

FILED AND RECORDED IN THE OFFICE OF THE COUNTY CLERK OF EL PASO COUNTY, TEXAS PLAT RECORD, PAGE 33, FILE NO. 10-150-S

FILING MAP

RESTRICTIVE COVENANTS FOR THIS SUBDIVISION ARE ON FILE WITH THE OFFICE OF THE COUNTY CLERK, EL PASO COUNTY, TEXAS, BOOK 733, PAGE 621, INSTR. 10736, DATE 11-3-76.

SUB-LAND, INC.
CONSULTING ENGINEERS-LAND DEVELOPERS
SURVEYING-CONSTRUCTION MANAGEMENT

10-150-S