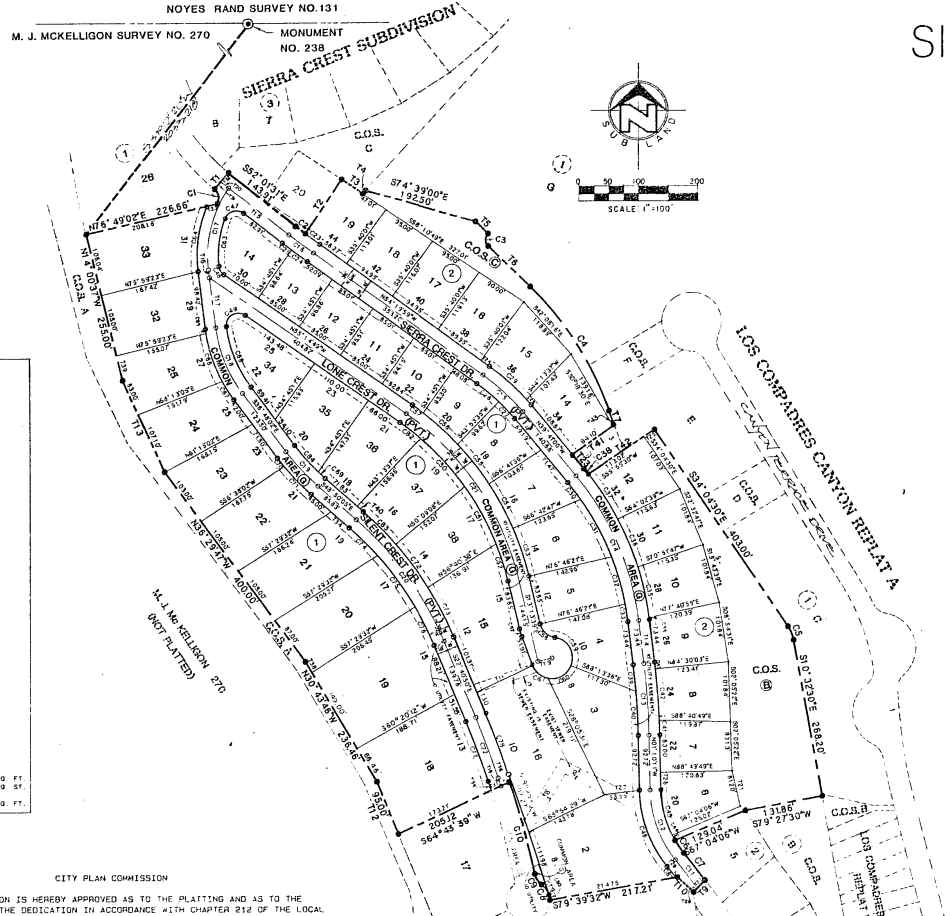


# SIERRA CREST REPLAT "D"

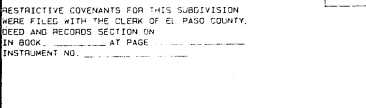
BEING A REPLAT OF ALL OF LOTS 2 THROUGH 16 AND 18 THROUGH 25, BLOCK 1, AND ALL OF LOTS 6 THROUGH 12 AND 14 THROUGH 19, BLOCK 2 AND A PORTION OF COMMON OPEN SPACES B AND C AND A PORTION OF COMMON AREA G, SIERRA CREST, CITY OF EL PASO, EL PASO COUNTY, TEXAS

CONTAINING 19.368 ACRES

NO.	BEARING	CHORD	DELTA	RADIUS	LENGTH	TAN	NO.	BEARING	DISTANCE
CA 101	S 89° 51' 30" W	21.09'	0° 51' 30"	1872.00'	21.09'	10.55'	72	N 89° 51' 30" W	102.81'
CA 102	S 89° 51' 30" W	21.09'	0° 51' 30"	1872.00'	21.09'	10.55'	73	N 89° 51' 30" W	102.81'
CA 103	S 89° 51' 30" W	21.09'	0° 51' 30"	1872.00'	21.09'	10.55'	74	N 89° 51' 30" W	102.81'
CA 104	S 89° 51' 30" W	21.09'	0° 51' 30"	1872.00'	21.09'	10.55'	75	N 89° 51' 30" W	102.81'
CA 105	S 89° 51' 30" W	21.09'	0° 51' 30"	1872.00'	21.09'	10.55'	76	N 89° 51' 30" W	102.81'
CA 106	S 89° 51' 30" W	21.09'	0° 51' 30"	1872.00'	21.09'	10.55'	77	N 89° 51' 30" W	102.81'
CA 107	S 89° 51' 30" W	21.09'	0° 51' 30"	1872.00'	21.09'	10.55'	78	N 89° 51' 30" W	102.81'
CA 108	S 89° 51' 30" W	21.09'	0° 51' 30"	1872.00'	21.09'	10.55'	79	N 89° 51' 30" W	102.81'
CA 109	S 89° 51' 30" W	21.09'	0° 51' 30"	1872.00'	21.09'	10.55'	80	N 89° 51' 30" W	102.81'
CA 110	S 89° 51' 30" W	21.09'	0° 51' 30"	1872.00'	21.09'	10.55'	81	N 89° 51' 30" W	102.81'
CA 111	S 89° 51' 30" W	21.09'	0° 51' 30"	1872.00'	21.09'	10.55'	82	N 89° 51' 30" W	102.81'
CA 112	S 89° 51' 30" W	21.09'	0° 51' 30"	1872.00'	21.09'	10.55'	83	N 89° 51' 30" W	102.81'
CA 113	S 89° 51' 30" W	21.09'	0° 51' 30"	1872.00'	21.09'	10.55'	84	N 89° 51' 30" W	102.81'
CA 114	S 89° 51' 30" W	21.09'	0° 51' 30"	1872.00'	21.09'	10.55'	85	N 89° 51' 30" W	102.81'
CA 115	S 89° 51' 30" W	21.09'	0° 51' 30"	1872.00'	21.09'	10.55'	86	N 89° 51' 30" W	102.81'
CA 116	S 89° 51' 30" W	21.09'	0° 51' 30"	1872.00'	21.09'	10.55'	87	N 89° 51' 30" W	102.81'
CA 117	S 89° 51' 30" W	21.09'	0° 51' 30"	1872.00'	21.09'	10.55'	88	N 89° 51' 30" W	102.81'
CA 118	S 89° 51' 30" W	21.09'	0° 51' 30"	1872.00'	21.09'	10.55'	89	N 89° 51' 30" W	102.81'
CA 119	S 89° 51' 30" W	21.09'	0° 51' 30"	1872.00'	21.09'	10.55'	90	N 89° 51' 30" W	102.81'
CA 120	S 89° 51' 30" W	21.09'	0° 51' 30"	1872.00'	21.09'	10.55'	91	N 89° 51' 30" W	102.81'
CA 121	S 89° 51' 30" W	21.09'	0° 51' 30"	1872.00'	21.09'	10.55'	92	N 89° 51' 30" W	102.81'
CA 122	S 89° 51' 30" W	21.09'	0° 51' 30"	1872.00'	21.09'	10.55'	93	N 89° 51' 30" W	102.81'
CA 123	S 89° 51' 30" W	21.09'	0° 51' 30"	1872.00'	21.09'	10.55'	94	N 89° 51' 30" W	102.81'
CA 124	S 89° 51' 30" W	21.09'	0° 51' 30"	1872.00'	21.09'	10.55'	95	N 89° 51' 30" W	102.81'
CA 125	S 89° 51' 30" W	21.09'	0° 51' 30"	1872.00'	21.09'	10.55'	96	N 89° 51' 30" W	102.81'
CA 126	S 89° 51' 30" W	21.09'	0° 51' 30"	1872.00'	21.09'	10.55'	97	N 89° 51' 30" W	102.81'
CA 127	S 89° 51' 30" W	21.09'	0° 51' 30"	1872.00'	21.09'	10.55'	98	N 89° 51' 30" W	102.81'
CA 128	S 89° 51' 30" W	21.09'	0° 51' 30"	1872.00'	21.09'	10.55'	99	N 89° 51' 30" W	102.81'
CA 129	S 89° 51' 30" W	21.09'	0° 51' 30"	1872.00'	21.09'	10.55'	100	N 89° 51' 30" W	102.81'



WEEK 1	WEEK 2
LOT 2 28,827.59 FT	LOT 10 9,949.59 FT
LOT 3 13,014.39 FT	LOT 11 8,299.93 FT
LOT 4 13,014.39 FT	LOT 12 8,299.93 FT
LOT 5 13,014.39 FT	LOT 13 8,299.93 FT
LOT 6 13,014.39 FT	LOT 14 8,299.93 FT
LOT 7 13,014.39 FT	LOT 15 8,299.93 FT
LOT 8 13,014.39 FT	LOT 16 8,299.93 FT
LOT 9 13,014.39 FT	LOT 17 8,299.93 FT
LOT 11 10,832.59 FT	LOT 18 8,299.93 FT
LOT 12 10,832.59 FT	LOT 19 8,299.93 FT
LOT 13 10,832.59 FT	LOT 20 8,299.93 FT
LOT 14 10,832.59 FT	LOT 21 8,299.93 FT
LOT 15 10,832.59 FT	LOT 22 8,299.93 FT
LOT 16 10,832.59 FT	LOT 23 8,299.93 FT
LOT 17 10,832.59 FT	LOT 24 8,299.93 FT
LOT 18 10,832.59 FT	LOT 25 8,299.93 FT
LOT 19 8,938.59 FT	



CITY PLAN COMMISSION

THIS SUBDIVISION IS HEREBY APPROVED AS TO THE PLATTING AND AS TO THE CONDITIONS OF THE DEDICATION IN ACCORDANCE WITH CHAPTER 212 OF THE LOCAL GOVERNMENT CODE OF TEXAS THIS FIRST DAY OF JUNE, 1989, A.D.

*Lucretia R. Lopez* CITY CLERK  
*Raymond* CITY ENGINEER

ACCEPTED AND ADOPTED BY THE CITY COUNCIL OF EL PASO THIS THIRTEENTH DAY OF JUNE, 1989, A.D.

*Carole Foster* CITY CLERK  
*Suzanne Lopez* MAYOR  
*Perrin Casado* CITY ENGINEER

APPROVED FOR FILING THIS 20th DAY OF July, 1989, A.D.

FILED AND RECORDED IN THE OFFICE OF THE COUNTY CLERK OF EL PASO COUNTY, TEXAS THIS 20th DAY OF July, 1989, A.D. IN VOLUME 09564 OF THE PLAT RECORD, PAGE 27

*H. Enriquez* COUNTY CLERK  
*Chris Casado* BY DEPUTY

SUBDIVISION PLAT PREPARED BY AND UNDER THE SUPERVISION OF SERGIO PLAZA, H.P.S.

*S. P. Land*

SUB-LAND, INC.  
 CIVIL ENGINEERS - LAND SURVEYORS  
 LAND PLANNERS - CONSTRUCTION MANAGEMENT  
 6600 WESTWOOD DRIVE EL PASO, TEXAS 79912 (915) 534-4457

178-5

STATE OF TEXAS  
 COUNTY OF EL PASO

DEDICATION

CRAZY CAT JOINT VENTURE, CRAZY CAT INVESTMENTS, INC., JENNA SCOTT, GEORGE MCALMON, RANDY S. JOHNSON AND ALEXIUS PATRICIA JOHNSON, MCGINNIS CONSTRUCTION CORPORATION, AND THE SIERRA CREST HOMEOWNERS ASSOCIATION, OWNERS OF THIS LAND, HEREBY PRESENT THIS MAP AND DEDICATE TO USE OF THE PUBLIC THE UTILITY EASEMENTS AS HEREON LAID DOWN AND DESIGNATED, INCLUDING ALL PRIVATE STREETS AS UTILITY EASEMENTS, OVERHEAD EASEMENTS AS SHOWN ON THE PLAT AND EASEMENTS FOR BURIED SERVICE WIRES, CONDUITS AND PIPES FOR UNDERGROUND UTILITIES AND THE RIGHT TO INGRESS AND EGRESS FOR SERVICE AND CONSTRUCTION AND THE RIGHT TO TRIM INTERFERING TREES AND

ATTEST:

BY: *Jenna Scott*  
 JENNA SCOTT, SECRETARY, MCGINNIS CONSTRUCTION CORPORATION

BY: *George McAlmon*  
 GEORGE MCALMON, MANAGING PARTNER OF CRAZY CAT INVESTMENTS, INC.

BY: *Randy S. Johnson*  
 RANDY S. JOHNSON, MANAGING PARTNER OF CRAZY CAT JOINT VENTURE, AND AS PRESIDENT OF SIERRA CREST HOMEOWNERS ASSOCIATION

BY: *Alexiuss Patricia Johnson*  
 ALEXIUS PATRICIA JOHNSON, MANAGING PARTNER OF CRAZY CAT INVESTMENTS, INC.

BY: *Ronald E. McGinnis*  
 RONALD E. MCGINNIS, AS PRESIDENT OF MCGINNIS CONSTRUCTION CORPORATION

STATE OF TEXAS  
 COUNTY OF EL PASO

ACKNOWLEDGEMENT

THIS STATEMENT WAS ACKNOWLEDGED BEFORE ME ON 19 JUNE 89 BY WILLIAM VAN HASSELEN, III, AS MANAGING PARTNER OF CRAZY CAT INVESTMENTS, INC., AS MANAGING PARTNER OF CRAZY CAT JOINT VENTURE, AND AS PRESIDENT OF SIERRA CREST HOMEOWNERS ASSOCIATION.

*William Van Hasselein III*  
 NOTARY PUBLIC, STATE OF TEXAS  
 MY COMMISSION EXPIRES 27 JUNE 93

STATE OF TEXAS  
 COUNTY OF EL PASO

ACKNOWLEDGEMENT

THIS STATEMENT WAS ACKNOWLEDGED BEFORE ME ON 6/10/89 BY JENNA SCOTT.

*Jenna Scott*  
 NOTARY PUBLIC, STATE OF TEXAS  
 MY COMMISSION EXPIRES 12/23/89

STATE OF TEXAS  
 COUNTY OF EL PASO

ACKNOWLEDGEMENT

THIS STATEMENT WAS ACKNOWLEDGED BEFORE ME ON June 9, 1989 BY GEORGE MCALMON.

*George McAlmon*  
 NOTARY PUBLIC, STATE OF TEXAS  
 MY COMMISSION EXPIRES 2-2-93

STATE OF TEXAS  
 COUNTY OF EL PASO

ACKNOWLEDGEMENT

THIS STATEMENT WAS ACKNOWLEDGED BEFORE ME ON THE 6-25-89 BY RANDY S. JOHNSON.

*Randy S. Johnson*  
 NOTARY PUBLIC, STATE OF TEXAS  
 MY COMMISSION EXPIRES 7-2-91

STATE OF TEXAS  
 COUNTY OF EL PASO

ACKNOWLEDGEMENT

THIS STATEMENT WAS ACKNOWLEDGED BEFORE ME ON 6-22-89 BY ALEXIUS PATRICIA JOHNSON.

*Alexiuss Patricia Johnson*  
 NOTARY PUBLIC, STATE OF TEXAS  
 MY COMMISSION EXPIRES 7-2-91

STATE OF TEXAS  
 COUNTY OF EL PASO

ACKNOWLEDGEMENT

THIS STATEMENT WAS ACKNOWLEDGED BEFORE ME ON JUNE 19, 1989 BY RONALD E. MCGINNIS, AS PRESIDENT OF MCGINNIS CONSTRUCTION CORPORATION.

*Ronald E. McGinnis*  
 NOTARY PUBLIC, STATE OF TEXAS  
 MY COMMISSION EXPIRES 7-2-91