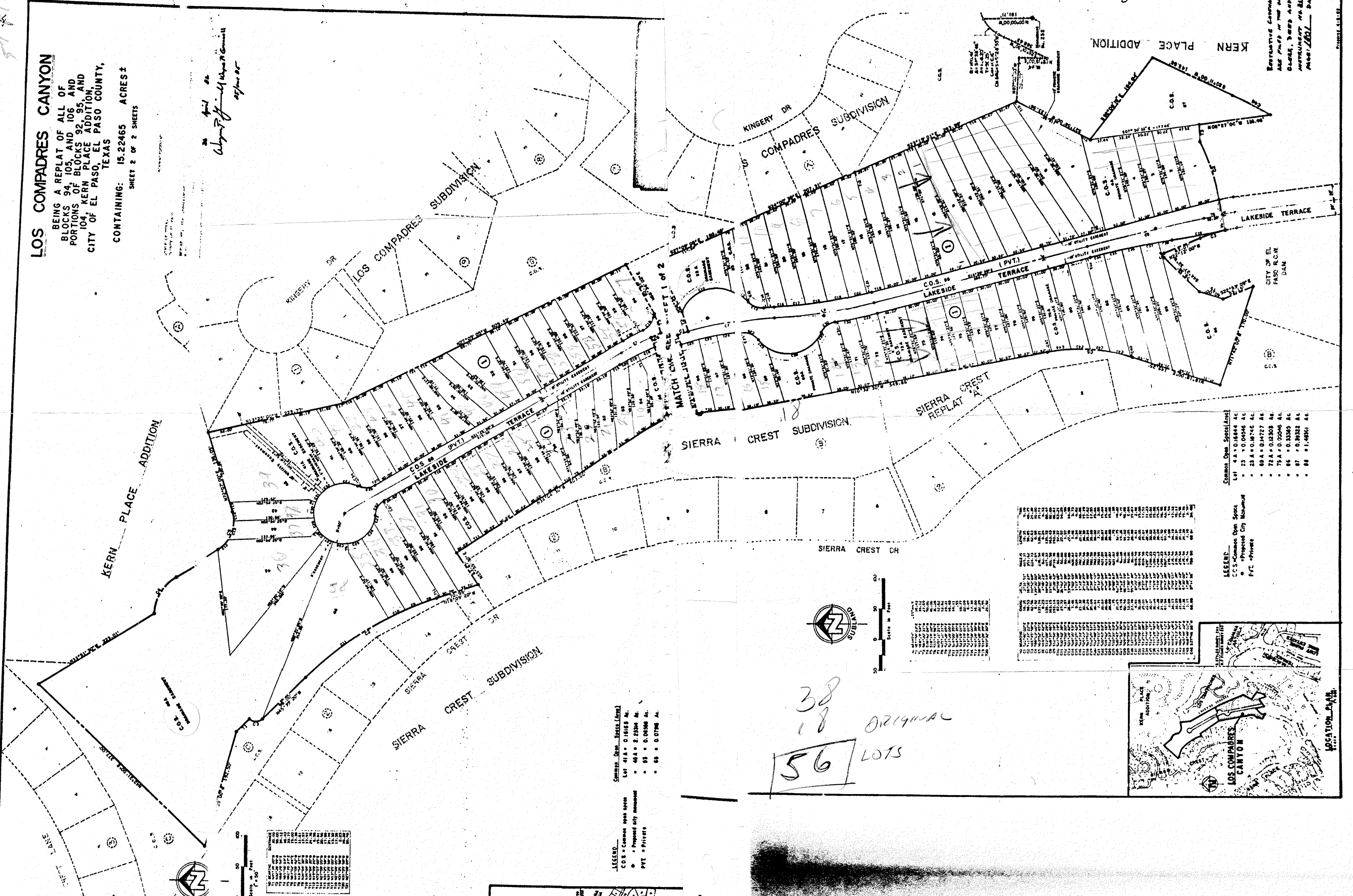


MAP 1
 FILED - 82?
 BOB DICKMAN

LOS COMPADRES CANYON
 BEING A REPLAT OF ALL OF
 BLOCKS 94, 105, AND 106 AND
 PORTIONS OF BLOCKS 92, 95, AND
 104, KERN PLACE ADDITION,
 CITY OF EL PASO, TEXAS
 CONTAINING: 15.22465 ACRES ±
 SHEET 2 OF 2 SHEETS



LEGGED:
 C.O.S. - Common Own. Spots
 • - Proposed City Block
 PVT. - Private

Common Own. Spots (Acres)
 LOT 23 0.00000 AC
 • 23 0.00000 AC
 • 24 0.00000 AC
 • 25 0.00000 AC
 • 26 0.00000 AC
 • 27 0.00000 AC
 • 28 0.00000 AC
 • 29 0.00000 AC
 • 30 0.00000 AC
 • 31 0.00000 AC
 • 32 0.00000 AC
 • 33 0.00000 AC
 • 34 0.00000 AC
 • 35 0.00000 AC
 • 36 0.00000 AC
 • 37 0.00000 AC
 • 38 0.00000 AC
 • 39 0.00000 AC
 • 40 0.00000 AC
 • 41 0.00000 AC
 • 42 0.00000 AC
 • 43 0.00000 AC
 • 44 0.00000 AC
 • 45 0.00000 AC
 • 46 0.00000 AC
 • 47 0.00000 AC
 • 48 0.00000 AC
 • 49 0.00000 AC
 • 50 0.00000 AC
 • 51 0.00000 AC
 • 52 0.00000 AC
 • 53 0.00000 AC
 • 54 0.00000 AC
 • 55 0.00000 AC
 • 56 0.00000 AC
 • 57 0.00000 AC
 • 58 0.00000 AC
 • 59 0.00000 AC
 • 60 0.00000 AC
 • 61 0.00000 AC
 • 62 0.00000 AC
 • 63 0.00000 AC
 • 64 0.00000 AC
 • 65 0.00000 AC
 • 66 0.00000 AC
 • 67 0.00000 AC
 • 68 0.00000 AC
 • 69 0.00000 AC
 • 70 0.00000 AC
 • 71 0.00000 AC
 • 72 0.00000 AC
 • 73 0.00000 AC
 • 74 0.00000 AC
 • 75 0.00000 AC
 • 76 0.00000 AC
 • 77 0.00000 AC
 • 78 0.00000 AC
 • 79 0.00000 AC
 • 80 0.00000 AC
 • 81 0.00000 AC
 • 82 0.00000 AC
 • 83 0.00000 AC
 • 84 0.00000 AC
 • 85 0.00000 AC
 • 86 0.00000 AC
 • 87 0.00000 AC
 • 88 0.00000 AC
 • 89 0.00000 AC
 • 90 0.00000 AC
 • 91 0.00000 AC
 • 92 0.00000 AC
 • 93 0.00000 AC
 • 94 0.00000 AC
 • 95 0.00000 AC
 • 96 0.00000 AC
 • 97 0.00000 AC
 • 98 0.00000 AC
 • 99 0.00000 AC
 • 100 0.00000 AC
 • 101 0.00000 AC
 • 102 0.00000 AC
 • 103 0.00000 AC
 • 104 0.00000 AC
 • 105 0.00000 AC
 • 106 0.00000 AC
 • 107 0.00000 AC
 • 108 0.00000 AC
 • 109 0.00000 AC
 • 110 0.00000 AC
 • 111 0.00000 AC
 • 112 0.00000 AC
 • 113 0.00000 AC
 • 114 0.00000 AC
 • 115 0.00000 AC
 • 116 0.00000 AC
 • 117 0.00000 AC
 • 118 0.00000 AC
 • 119 0.00000 AC
 • 120 0.00000 AC
 • 121 0.00000 AC
 • 122 0.00000 AC
 • 123 0.00000 AC
 • 124 0.00000 AC
 • 125 0.00000 AC
 • 126 0.00000 AC
 • 127 0.00000 AC
 • 128 0.00000 AC
 • 129 0.00000 AC
 • 130 0.00000 AC
 • 131 0.00000 AC
 • 132 0.00000 AC
 • 133 0.00000 AC
 • 134 0.00000 AC
 • 135 0.00000 AC
 • 136 0.00000 AC
 • 137 0.00000 AC
 • 138 0.00000 AC
 • 139 0.00000 AC
 • 140 0.00000 AC
 • 141 0.00000 AC
 • 142 0.00000 AC
 • 143 0.00000 AC
 • 144 0.00000 AC
 • 145 0.00000 AC
 • 146 0.00000 AC
 • 147 0.00000 AC
 • 148 0.00000 AC
 • 149 0.00000 AC
 • 150 0.00000 AC
 • 151 0.00000 AC
 • 152 0.00000 AC
 • 153 0.00000 AC
 • 154 0.00000 AC
 • 155 0.00000 AC
 • 156 0.00000 AC
 • 157 0.00000 AC
 • 158 0.00000 AC
 • 159 0.00000 AC
 • 160 0.00000 AC
 • 161 0.00000 AC
 • 162 0.00000 AC
 • 163 0.00000 AC
 • 164 0.00000 AC
 • 165 0.00000 AC
 • 166 0.00000 AC
 • 167 0.00000 AC
 • 168 0.00000 AC
 • 169 0.00000 AC
 • 170 0.00000 AC
 • 171 0.00000 AC
 • 172 0.00000 AC
 • 173 0.00000 AC
 • 174 0.00000 AC
 • 175 0.00000 AC
 • 176 0.00000 AC
 • 177 0.00000 AC
 • 178 0.00000 AC
 • 179 0.00000 AC
 • 180 0.00000 AC
 • 181 0.00000 AC
 • 182 0.00000 AC
 • 183 0.00000 AC
 • 184 0.00000 AC
 • 185 0.00000 AC
 • 186 0.00000 AC
 • 187 0.00000 AC
 • 188 0.00000 AC
 • 189 0.00000 AC
 • 190 0.00000 AC
 • 191 0.00000 AC
 • 192 0.00000 AC
 • 193 0.00000 AC
 • 194 0.00000 AC
 • 195 0.00000 AC
 • 196 0.00000 AC
 • 197 0.00000 AC
 • 198 0.00000 AC
 • 199 0.00000 AC
 • 200 0.00000 AC

38
 18
 56 ORIGINAL
 LOTS

LOS COMPADRES CANYON
 BEING A REPLAT OF ALL OF
 BLOCKS 94, 105, AND 106 AND
 PORTIONS OF BLOCKS 92, 95, AND
 104, KERN PLACE ADDITION,
 CITY OF EL PASO, TEXAS
 CONTAINING: 15.22465 ACRES ±
 SHEET 2 OF 2 SHEETS

LEGGED:
 C.O.S. - Common Own. Spots
 • - Proposed City Block
 PVT. - Private

