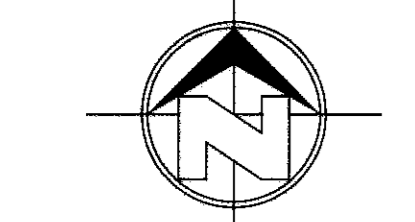


TUSCANY AT RIDGEVIEW

A PORTION OF TRACT 1A,
S. J. LARKIN SURVEY NO. 265,
CITY OF EL PASO, EL PASO COUNTY, TEXAS
CONTAINING: 24.994 ACRES

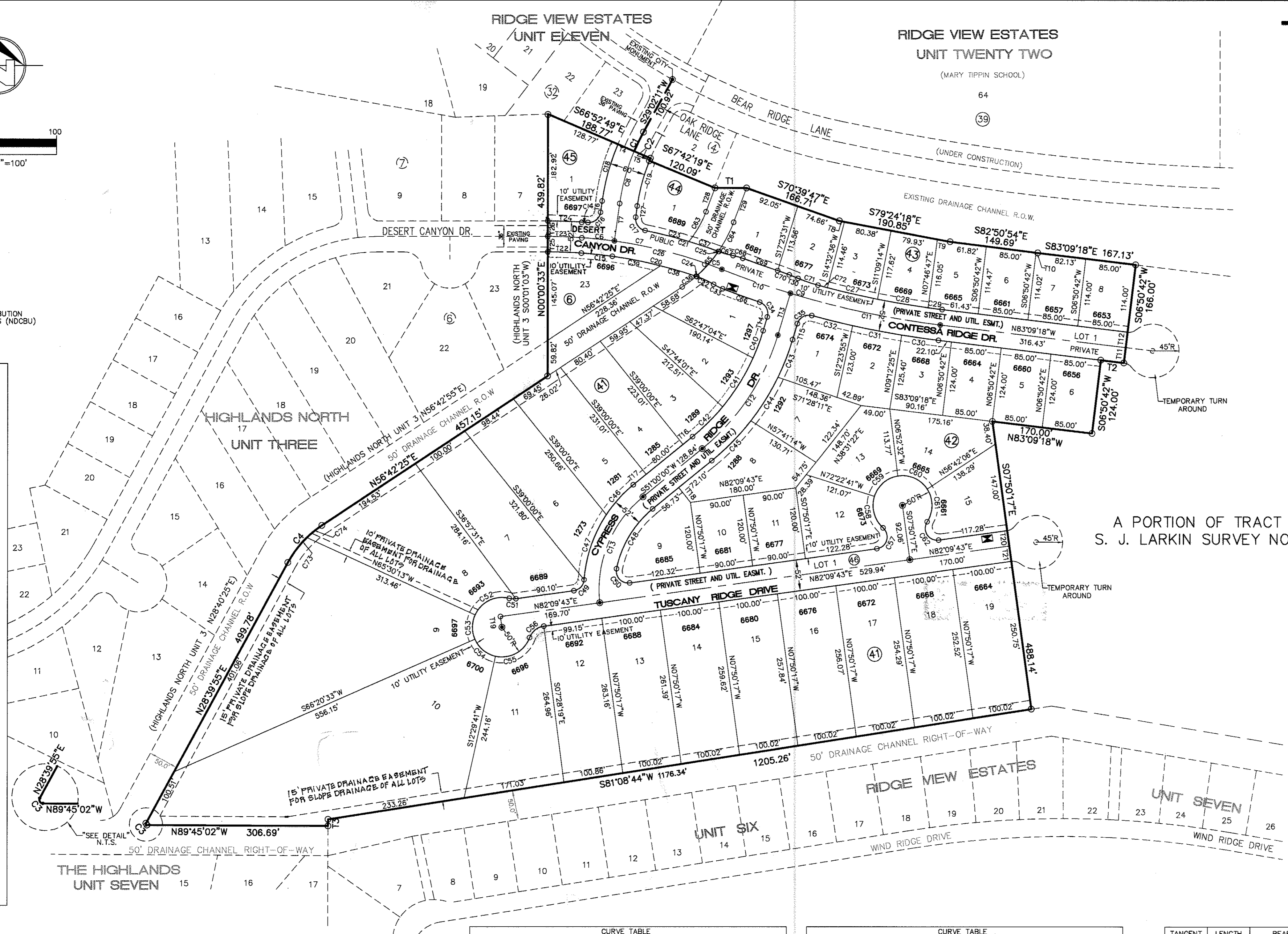


SCALE: 1"=100'

LEGEND

- PROPOSED CITY MONUMENT
- EXISTING CITY MONUMENT
- ⊙ BLOCK NUMBER
- 9 LOT NUMBER
- ▣ NEIGHBORHOOD DISTRIBUTION COLLECTION BOX UNITS (NDCBU)

LOT AREAS	
BLOCK 6	
LOT 23	14,752 SQ. FT.
BLOCK 41	
LOT 1	13,569 SQ. FT.
LOT 2	14,249 SQ. FT.
LOT 3	16,574 SQ. FT.
LOT 4	18,155 SQ. FT.
LOT 5	22,820 SQ. FT.
LOT 6	27,456 SQ. FT.
LOT 7	32,679 SQ. FT.
LOT 8	39,440 SQ. FT.
LOT 9	47,883 SQ. FT.
LOT 10	100,059 SQ. FT.
LOT 11	30,409 SQ. FT.
LOT 12	26,408 SQ. FT.
LOT 13	26,228 SQ. FT.
LOT 14	26,050 SQ. FT.
LOT 15	25,873 SQ. FT.
LOT 16	25,695 SQ. FT.
LOT 17	25,518 SQ. FT.
LOT 18	25,341 SQ. FT.
LOT 19	25,163 SQ. FT.
BLOCK 42	
LOT 1	11,366 SQ. FT.
LOT 2	11,097 SQ. FT.
LOT 3	10,890 SQ. FT.
LOT 4	10,540 SQ. FT.
LOT 5	10,540 SQ. FT.
LOT 6	10,540 SQ. FT.
LOT 7	14,049 SQ. FT.
LOT 8	16,631 SQ. FT.
LOT 9	14,748 SQ. FT.
LOT 10	10,800 SQ. FT.
LOT 11	10,800 SQ. FT.
LOT 12	15,285 SQ. FT.
LOT 13	14,267 SQ. FT.
LOT 14	15,830 SQ. FT.
LOT 15	14,846 SQ. FT.
BLOCK 43	
LOT 1	11,006 SQ. FT.
LOT 2	9,838 SQ. FT.
LOT 3	9,752 SQ. FT.
LOT 4	9,772 SQ. FT.
LOT 5	9,709 SQ. FT.
LOT 6	9,711 SQ. FT.
LOT 7	9,890 SQ. FT.
LOT 8	9,890 SQ. FT.
BLOCK 44	
LOT 1	12,012 SQ. FT.
BLOCK 45	
LOT 1	16,065 SQ. FT.
DRAINAGE CHANNEL R.O.W.	
	18,741 SQ. FT.



A PORTION OF TRACT 1A,
S. J. LARKIN SURVEY NO. 265,

DEDICATION
THE STATE OF TEXAS
COUNTY OF EL PASO
ACRO DEVELOPERS II LIMITED PARTNERSHIP, OWNER OF THIS LAND, HEREBY PRESENT THIS MAP AND DEDICATES TO THE USE OF THE PUBLIC THE STREET RIGHT-OF-WAY, DRAINAGE RIGHT-OF-WAY AND UTILITY EASEMENTS AS HEREON LAID DOWN AND DESIGNATED, INCLUDING OVERHEAD EASEMENTS AS SHOWN ON THE PLAT AND EASEMENTS FOR BURIED SERVICE WIRES, CONDUITS AND PIPES FOR UNDERGROUND UTILITIES AND THE RIGHT TO INGRESS AND EGRESS FOR SERVICE AND CONSTRUCTION AND THE RIGHT TO TRIM INTERFERING TREES AND SHRUBS.

ACRO DEVELOPERS II LIMITED PARTNERSHIP
BY: *Dan J. O'Leary*
DAN J. O'LEARY, PRESIDENT
T & D DEVELOPERS, INC., GENERAL PARTNER

ACKNOWLEDGMENT
THE STATE OF TEXAS
COUNTY OF EL PASO
THIS INSTRUMENT WAS ACKNOWLEDGED BEFORE ME ON August 3, 2005 BY
DAN J. O'LEARY, AS PRESIDENT OF T & D DEVELOPERS, INC. GENERAL PARTNER OF ACRO DEVELOPERS II LIMITED PARTNERSHIP, ON BEHALF OF THE SAME.



Annette Currel
ANNETTE CURREL
NOTARY PUBLIC, STATE OF TEXAS
MY COMMISSION EXPIRES 11-30-07

CITY PLAN COMMISSION
THIS SUBDIVISION IS HEREBY APPROVED AS TO THE PLATTING AND AS TO THE CONDITIONS OF THE DEDICATION IN ACCORDANCE WITH CHAPTER 212 OF THE LOCAL GOVERNMENT CODE OF TEXAS THIS 14 DAY OF OCTOBER, 2005 A.D.

Ruby J. Jolley EXECUTIVE SECRETARY
Y. J. Jolley CHAIRPERSON

APPROVED FOR FILING THIS 1st DAY OF September, 2005, A.D.

Park Annunzio
DEPUTY DIRECTOR FOR ENGINEERING CITY ENGINEER

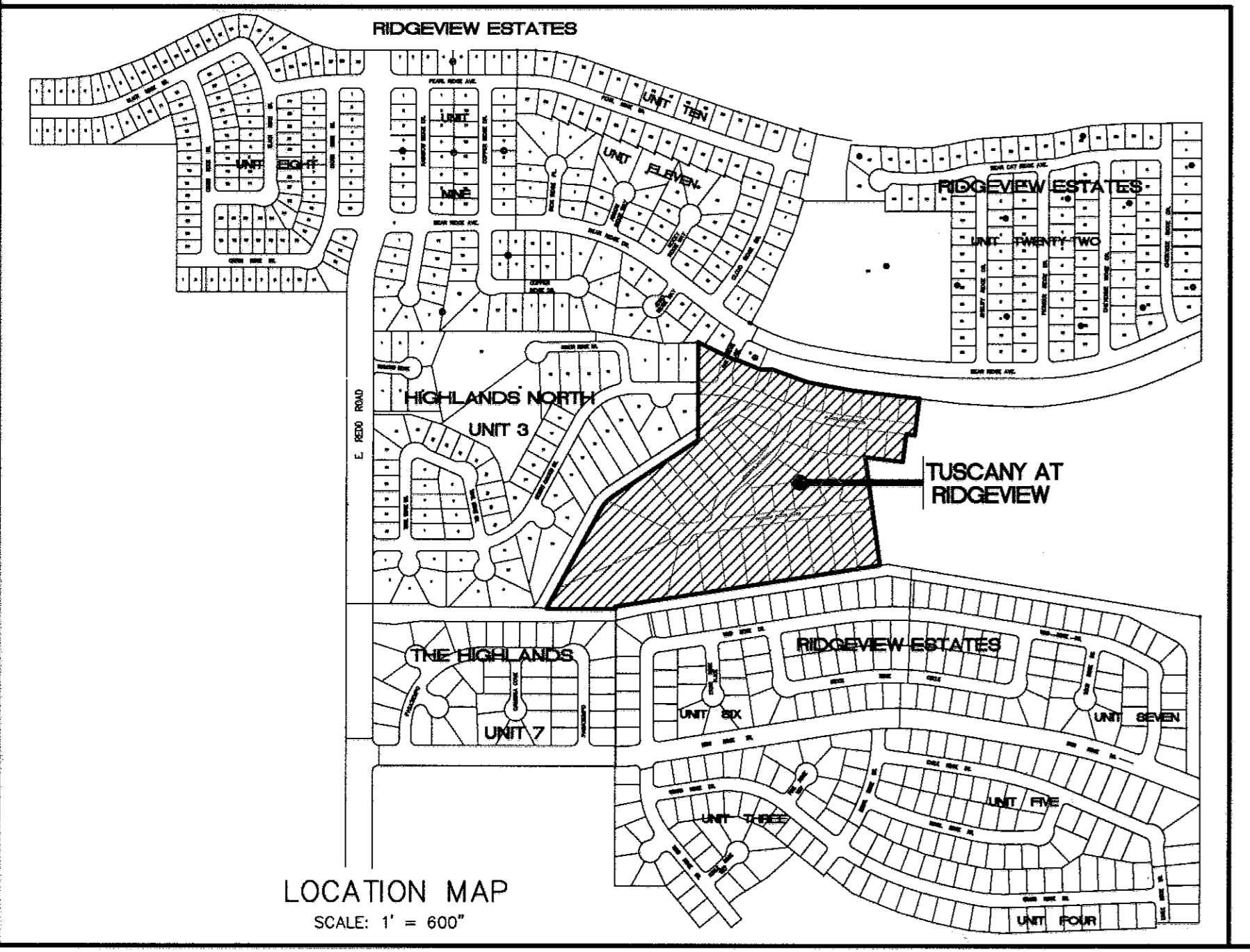
FILED AND RECORDED IN THE OFFICE OF THE COUNTY CLERK OF EL PASO COUNTY, TEXAS, THIS DAY OF September, 2005 A.D., IN VOLUME N/A OF THE PLAT RECORD, PAGE N/A
FILE NO. 200600247

Waldo Alvarez COUNTY CLERK
Sandra Acevedo BY DEPUTY

IMPROVEMENT PLANS PREPARED BY AND UNDER THE SUPERVISION OF GUILLERMO LICON, P.E.
SUBDIVISION PLAT PREPARED BY AND UNDER THE SUPERVISION OF GUILLERMO LICON, R.P.L.S.



"RESTRICTED COVENANTS FOR THIS SUBDIVISION ARE FILED IN THE OFFICE OF THE COUNTY CLERK, DEED AND RECORD SECTION, INSTRUMENT NO. 200600247
BOOK _____ PAGE _____ DATE 10/10/06"



CURVE TABLE						
CURVE	LENGTH	RADIUS	TANGENT	CHORD	BEARING	DELTA
C1	35.63'	345.00'	17.83'	35.61'	S26°04'41"W	05°55'00"
C2	4.54'	315.00'	2.67'	4.54'	S22°42'26"W	00°49'30"
C3	4.13'	2.00'	3.36'	3.44'	S30°32'34"E	118°24'57"
C4	85.65'	175.00'	43.70'	84.80'	S42°41'00"W	28°02'30"
C5	23.61'	800.00'	11.81'	23.61'	N69°23'03"W	01°41'28"
C6	55.83'	408.23'	27.94'	55.79'	S85°57'20"E	07°49'00"
C7	165.00'	800.00'	82.79'	164.71'	S76°08'19"E	11°49'02"
C8	91.33'	345.00'	45.93'	91.06'	N15°32'11"E	15°10'01"
C9	369.65'	1500.00'	182.37'	361.82'	S75°30'48"E	14°38'59"
C10	122.89'	1500.00'	61.48'	122.86'	S70°53'08"E	04°41'39"
C11	259.76'	1500.00'	130.21'	259.44'	S78°11'38"E	09°55'20"
C12	233.01'	390.00'	120.10'	229.56'	S33°53'01"W	34°3'58"
C13	200.40'	200.00'	109.52'	192.12'	N22°17'41"E	57°24'37"
C14	11.48'	435.23'	5.74'	11.48'	N89°06'30"W	01°30'39"
C15	52.28'	383.23'	26.18'	52.24'	S85°57'20"E	07°49'00"
C16	30.23'	20.00'	18.85'	27.44'	S51°31'11"E	86°36'42"
C17	30.23'	20.00'	18.85'	27.44'	S35°21'11"E	86°36'42"
C18	99.27'	375.00'	49.93'	98.98'	N15°32'11"E	15°10'01"
C19	78.85'	315.00'	39.63'	78.64'	N15°07'28"E	14°20'31"
C20	146.16'	774.00'	73.30'	145.94'	S76°38'15"E	10°49'09"
C21	129.31'	826.00'	64.70'	129.18'	S74°02'07"E	08°58'11"
C22	31.22'	150.00'	15.67'	31.16'	S65°10'07"E	11°55'25"
C23	76.54'	826.00'	38.30'	76.51'	N76°00'16"W	15°18'32"
C24	1.32'	774.00'	0.66'	1.32'	S71°10'45"E	00°05'51"
C25	0.57'	826.00'	0.28'	0.57'	S69°40'11"W	00°02'21"
C26	188.62'	800.00'	94.75'	188.18'	S75°17'34"E	13°30'31"
C27	87.20'	174.00'	43.61'	87.18'	S77°09'05"E	3°23'22"
C28	86.81'	1474.00'	43.42'	86.80'	S80°32'00"E	3°22'28"
C29	24.04'	1474.00'	12.02'	24.04'	S82°41'16"E	00°56'05"
C30	62.90'	1526.00'	31.46'	62.47'	S81°58'27"E	02°21'43"
C31	84.48'	1526.00'	42.25'	84.47'	S79°12'26"E	03°10'19"
C32	17.47'	1526.00'	35.74'	17.46'	S78°16'46"E	2°41'00"
C33	17.15'	100.00'	8.60'	17.13'	N84°07'10"W	09°49'32"
C34	30.82'	20.00'	19.42'	27.86'	N27°22'57"W	88°17'58"
C35	30.82'	20.00'	19.41'	27.86'	N60°54'53"E	88°17'42"
C36	29.59'	225.00'	14.81'	29.56'	S52°56'24"W	07°32'02"
C37	52.78'	826.00'	26.40'	52.77'	N71°31'11"W	03°39'39"

CURVE TABLE						
CURVE	LENGTH	RADIUS	TANGENT	CHORD	BEARING	DELTA
C38	62.99'	774.00'	31.52'	62.98'	N73°33'35"W	04°39'49"
C39	83.16'	774.00'	41.62'	83.12'	N78°58'10"W	06°09'21"
C40	48.89'	364.00'	24.48'	48.85'	N20°36'54"E	7°41'44"
C41	97.06'	364.00'	48.82'	96.77'	N32°08'05"E	15°16'37"
C42	71.53'	364.00'	35.88'	71.42'	N49°22'12"E	11°15'36"
C43	67.87'	416.00'	34.01'	67.79'	S21°26'28"W	9°20'51"
C44	86.38'	416.00'	43.34'	86.22'	S32°03'47"W	11°53'48"
C45	94.30'	416.00'	47.35'	94.10'	S44°30'37"W	12°59'19"
C46	68.03'	226.00'	34.27'	67.77'	S42°22'37"W	17°14'46"
C47	116.88'	226.00'	59.78'	115.58'	S18°56'18"W	29°37'51"
C48	119.97'	174.00'	62.48'	117.61'	S31°14'51"W	39°30'18"
C49	27.24'	20.00'	16.21'	25.18'	N43°08'33"E	78°02'20"
C50	38.16'	20.00'	28.21'	32.63'	S43°10'18"E	109°19'59"
C51	11.54'	30.00'	5.84'	11.47'	S86°49'09"E	22°02'17"
C52	69.55'	50.00'	41.74'	64.08'	S64°20'54"W	79°42'13"
C53	42.02'	50.00'	22.34'	40.80'	S00°25'10"W	48°09'14"
C54	46.99'	50.00'	25.39'	45.28'	S50°34'53"E	53°50'52"
C55	70.65'	50.00'	43.54'	65.67'	N61°28'42"E	82°03'58"
C56	32.34'	30.00'	17.94'	30.80'	N51°16'43"E	61°45'59"
C57	45.78'	20.00'	44.03'	36.42'	N16°35'27"E	131°08'32"
C58	58.12'	50.00'	32.85'	54.90'	S15°40'45"E	66°36'09"
C59	54.97'	50.00'	30.64'	52.25'	N49°07'08"E	62°59'37"
C60	57.67'	50.00'	32.52'	54.53'	S66°20'29"E	66°05'10"
C61	58.12'	50.00'	32.85'	54.90'	S00°00'11"W	66°36'09"
C62	45.78'	20.00'	44.03'	36.42'	N32°16'01"W	131°08'32"
C63	58.08'	175.00'	29.31'	57.82'	N30°09'20"E	19°01'00"
C64	55.62'	225.00'	27.95'	55.47'	S27°43'42"W	14°09'44"
C65	56.41'	225.00'	28.35'	56.26'	N41°59'29"E	14°21'50"
C66	66.73'	150.00'	33.38'	66.76'	N70°16'56"W	02°29'58"
C67	25.38'	150.00'	12.72'	25.35'	N74°29'48"W	09°41'37"
C68	17.08'	100.00'	8.56'	17.06'	N74°27'03"W	09°47'07"
C69	62.54'	1470.00'	31.27'	62.53'	S70°46'37"E	02°28'15"
C70	20.98'	100.00'	8.60'	20.95'	N69°59'40"W	04°00'08"
C71	35.73'	300.00'	17.89'	35.71'	S71°24'19"E	06°48'26"
C72	16.45'	1474.00'	8.23'	16.45'	S75°08'13"E	00°38'22"
C73	53.07'	175.00'	26.74'	52.87'	N37°21'13"E	17°22'35"
C74	32.58'	175.00'	16.34'	32.53'	S51°22'28"E	10°39'56"

TANGENT	LENGTH	BEARING
T1	53.42'	S69°54'36"E
T2	39.33'	S83°09'18"E
T3	11.04'	S00°03'24"W
T4	30.00'	S66°52'49"E
T5	30.00'	S66°52'49"E
T6	20.86'	N07°57'10"E
T7	83.53'	N07°57'10"E
T8	87.73'	S79°24'18"E
T9	21.81'	S79°24'18"E
T10	2.87'	N82°50'54"W
T11	26.00'	N06°50'42"E
T12	26.00'	N06°50'42"E
T13	73.35'	N16°46'02"E
T14	24.03'	S18°46'02"W
T15	28.04'	N16°46'02"E
T16	20.84'	N51°00'00"E
T17	28.00'	N51°00'00"E
T18	31.87'	N39°00'00"W
T19	18.16'	S07°50'17"E
T20	26.00'	S07°50'17"E
T21	26.00'	S07°50'17"E
T22	57.16'	S89°51'50"E
T23	57.22'	S89°51'50"E
T24	57.28'	S89°51'50"E
T25	26.00'	S00°00'33"W
T26	26.00'	S00°00'33"W
T27	19.01'	N07°57'10"E
T28	42.83'	N20°38'50"E
T29	61.56'	S20°38'50"W
T30	15.95'	N67°59'36"W

REVISED DATE: 08/02/05

SLI ENGINEERING, INC.
CIVIL ENGINEERS - LAND SURVEYORS
LAND PLANNERS - CONSTRUCTION MANAGEMENT
6600 WESTWIND DR. - EL PASO, TEXAS - 79912 - (915) 584-4457

TUSCANY AT RIDGEVIEW