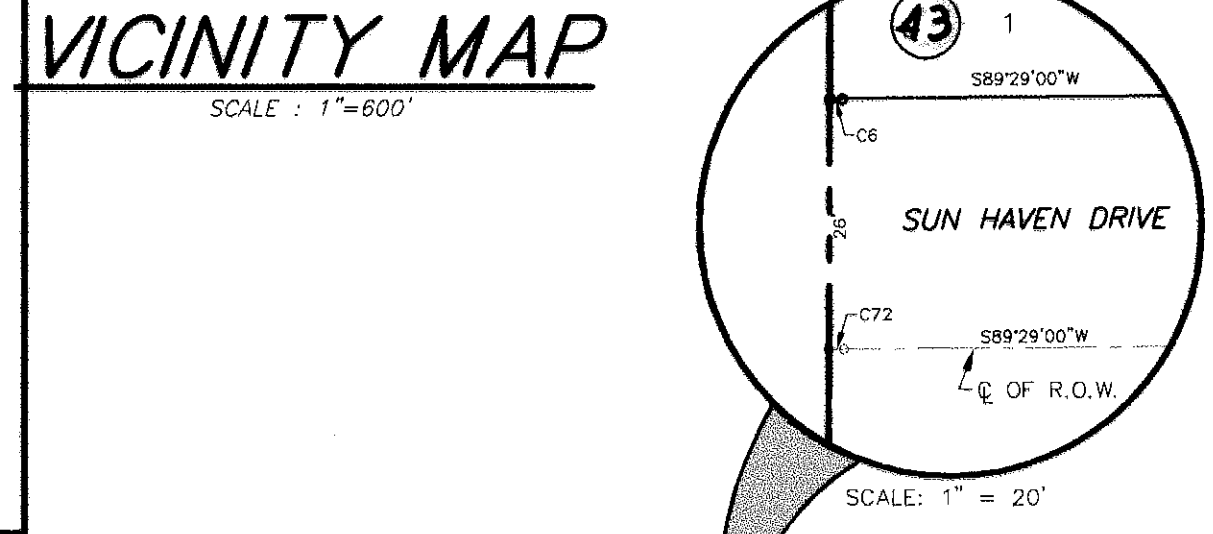
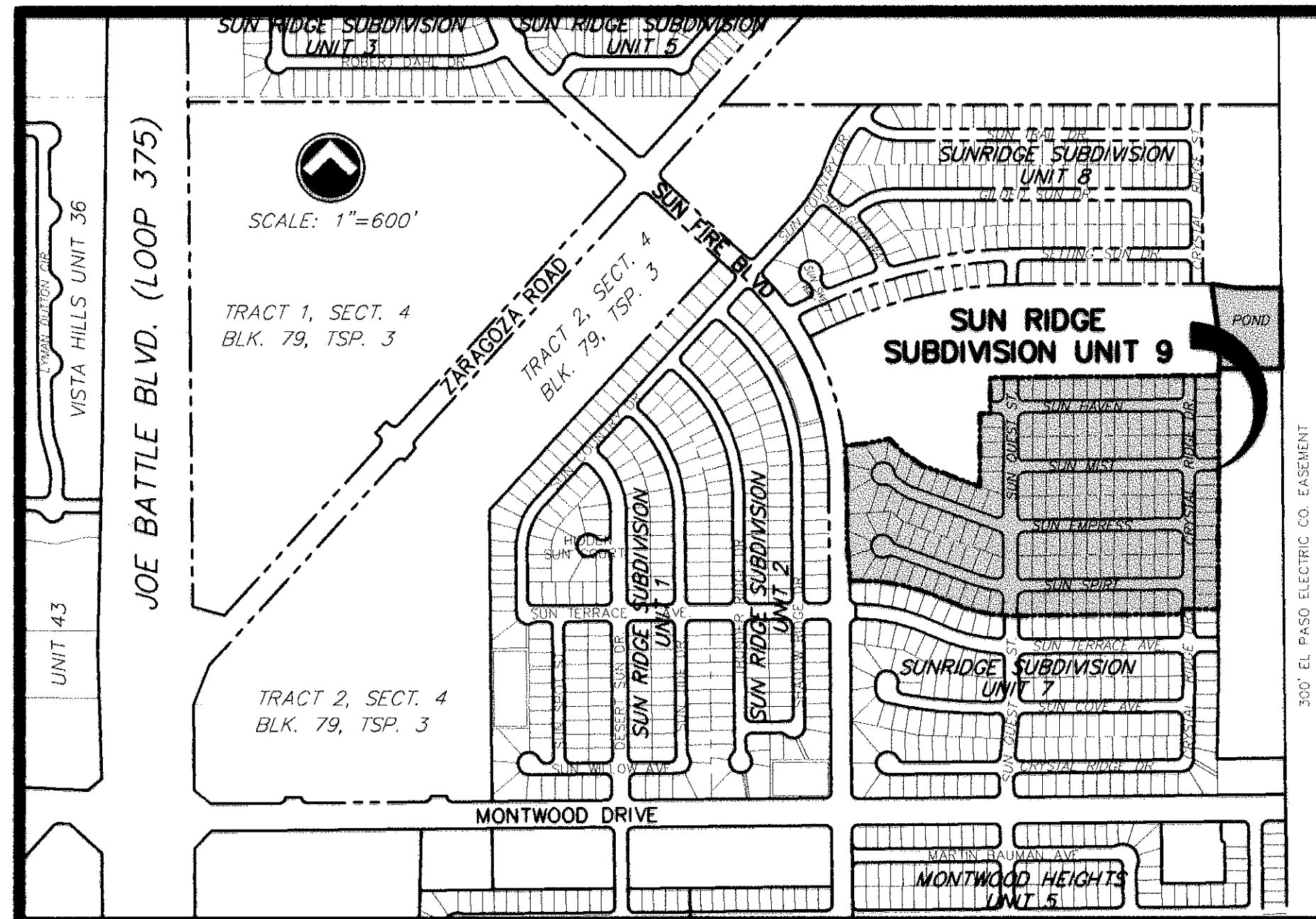
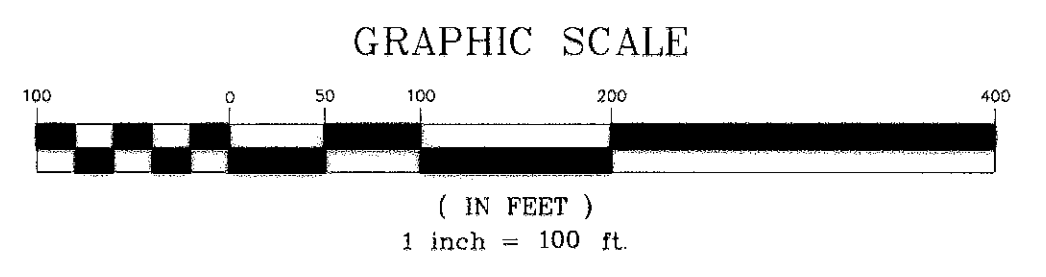
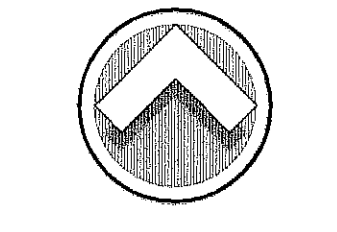
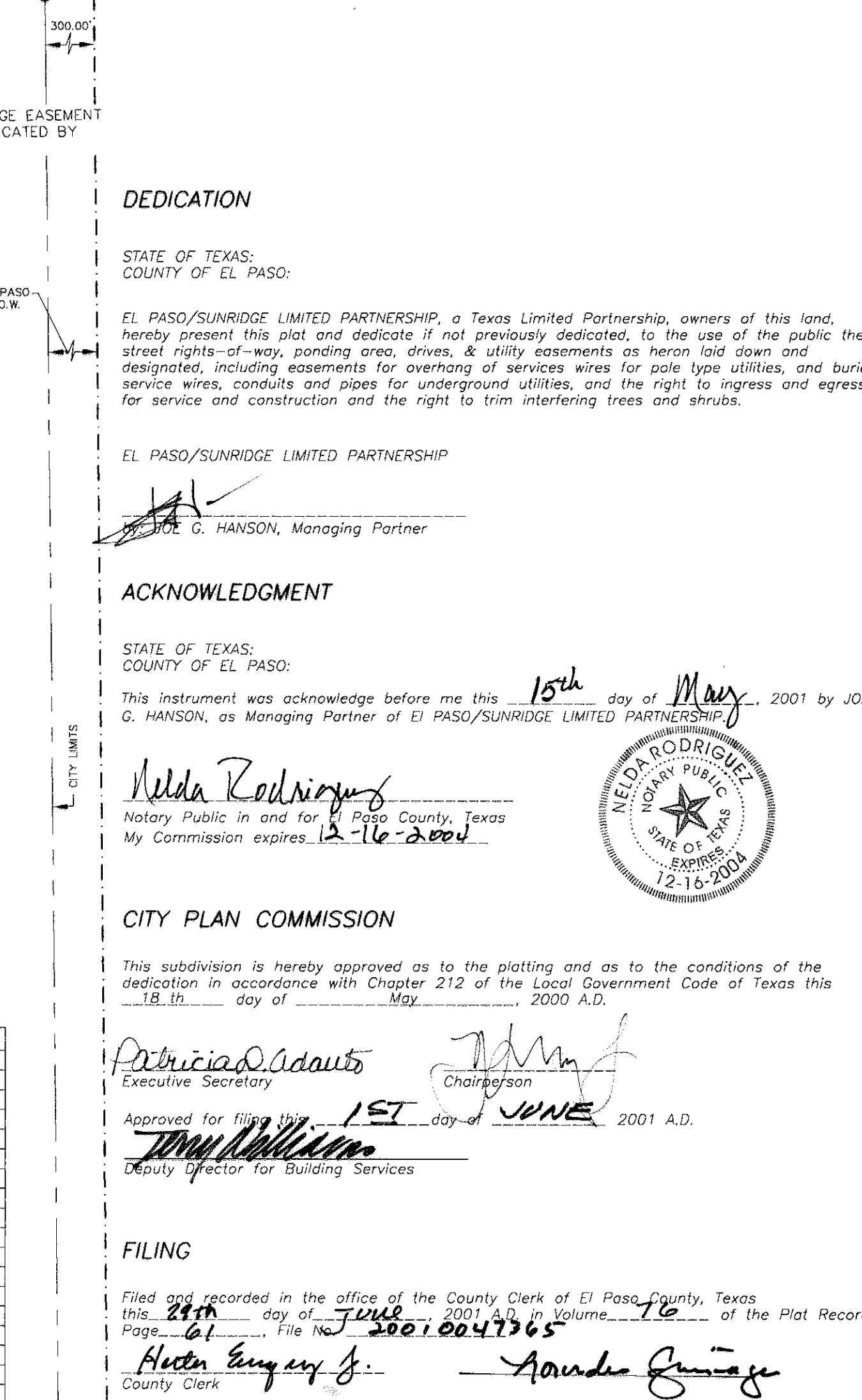
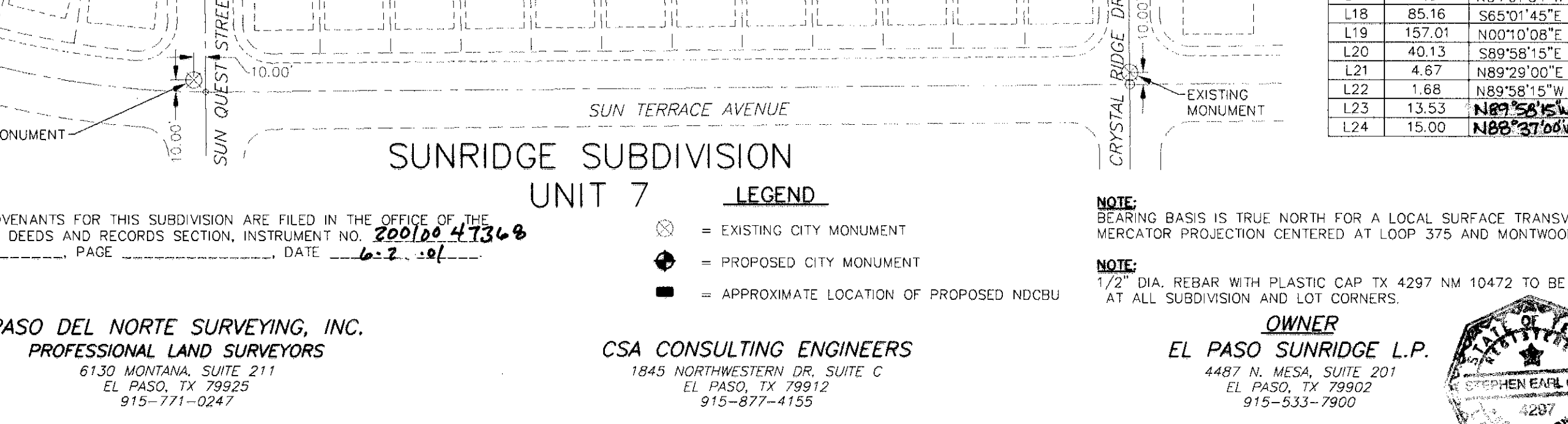
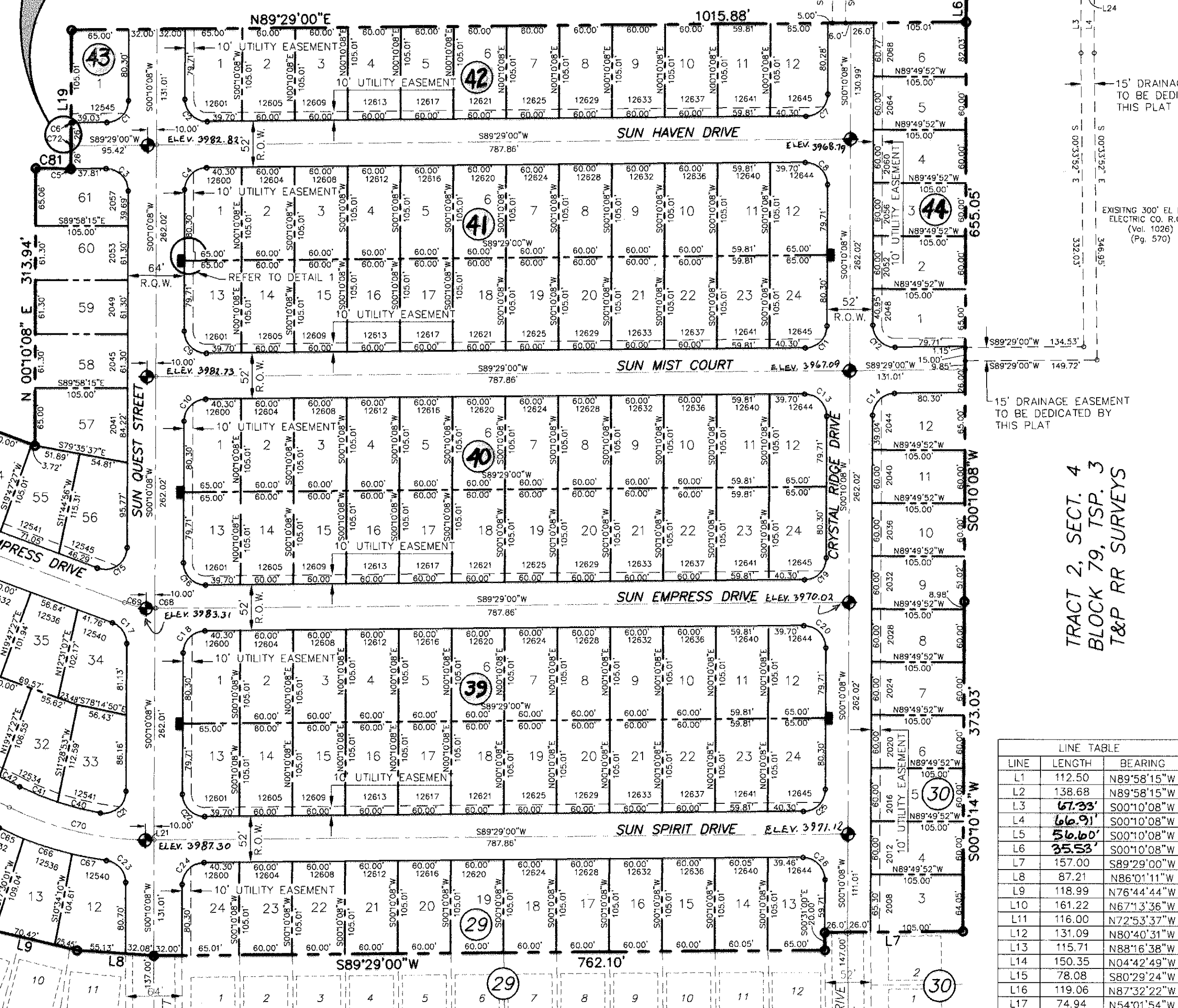
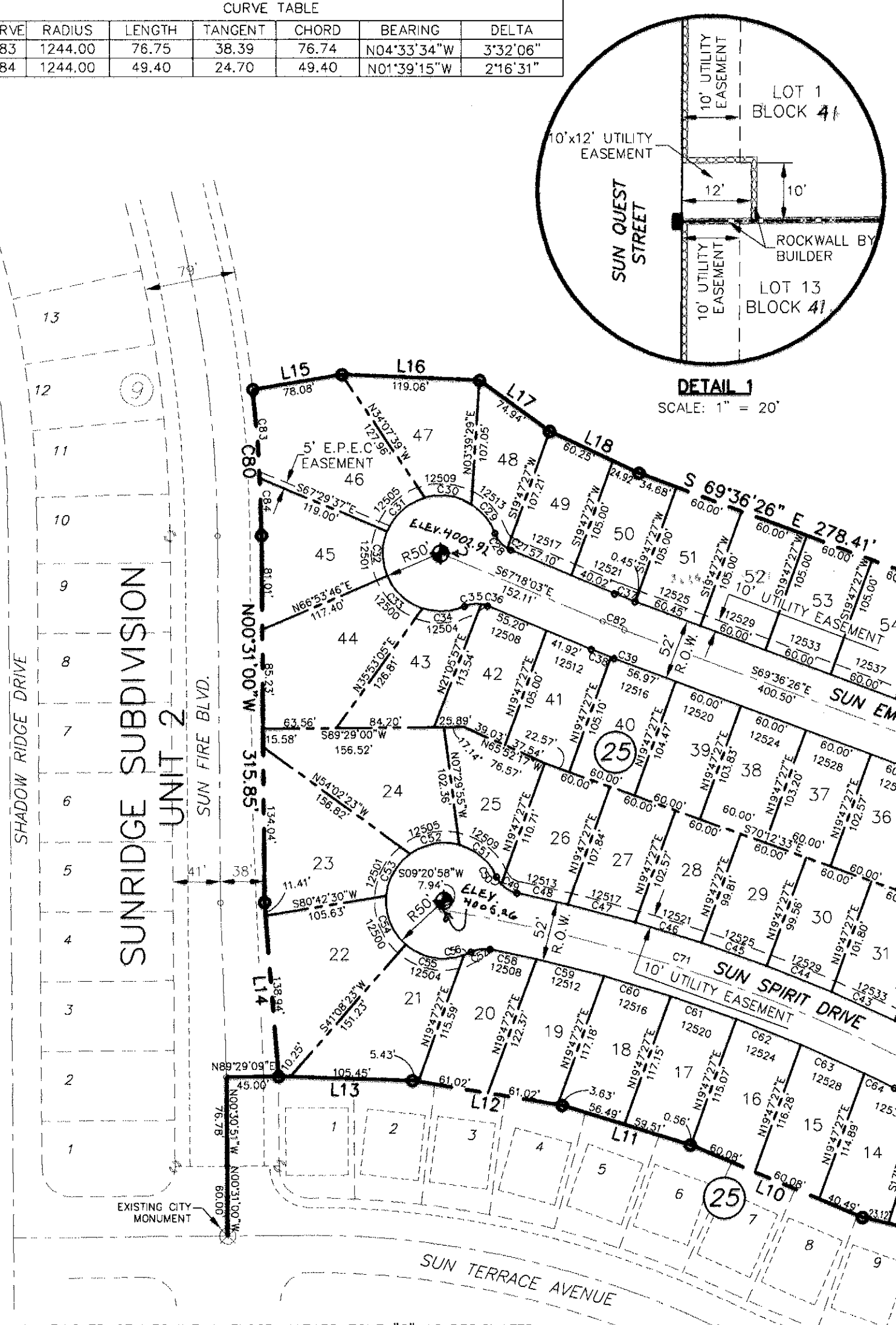


SUN RIDGE SUBDIVISION UNIT 9

BEING A PORTION OF TRACT 2, SECTION 4, BLOCK 79, TOWNSHIP 3, TEXAS & PACIFIC RAILWAY COMPANY SURVEYS, EL PASO, EL PASO COUNTY, TEXAS CONTAINING 163 RESIDENTIAL LOTS & 35.294± ACRES



CURVE TABLE					CURVE TABLE								
CURVE	RADIUS	LENGTH	TANGENT	CHORD	BEARING	DELTA	CURVE	RADIUS	LENGTH	TANGENT	CHORD	BEARING	DELTA
C1	25.00	38.97	24.70	35.14	N44°49'34"E	89°18'52"	C83	1244.00	76.75	38.39	76.74	N04°33'34"W	3°32'06"
C2	25.00	39.57	25.30	35.57	S45°10'26"E	90°41'08"	C84	1244.00	49.40	24.70	49.40	N01°39'15"W	2°16'31"
C3	25.00	39.57	25.30	35.57	N45°10'26"W	90°41'08"							
C4	25.00	38.97	24.70	35.14	S44°49'34"W	89°18'52"							
C5	826.00	1.90	0.95	1.90	N89°31'50"E	0°05'40"							
C6	774.00	1.27	0.64	1.27	N89°31'50"E	0°05'40"							
C7	25.00	38.97	24.70	35.14	N44°49'34"E	89°18'52"							
C8	25.00	39.57	25.30	35.57	N45°10'26"W	90°41'08"							
C9	25.00	39.57	25.30	35.57	S45°10'26"E	90°41'08"							
C10	25.00	38.97	24.70	35.14	S44°49'34"W	89°18'52"							
C11	25.00	38.97	24.70	35.14	N44°49'34"E	89°18'52"							
C12	25.00	39.57	25.30	35.57	S45°10'26"E	90°41'08"							
C13	25.00	39.57	25.30	35.57	N45°10'26"W	90°41'08"							
C14	25.00	38.97	24.70	35.14	S44°49'34"W	89°18'52"							
C15	25.00	48.09	35.85	41.01	N55°16'51"E	110°13'26"							
C16	25.00	39.57	25.30	35.57	S45°10'26"E	90°41'08"							
C17	25.00	30.45	17.43	28.60	N34°43'09"W	69°46'34"							
C18	25.00	38.97	24.70	35.14	S44°49'34"W	89°18'52"							
C19	25.00	38.97	24.70	35.14	N44°49'34"E	89°18'52"							
C20	25.00	39.57	25.30	35.57	N45°10'26"W	90°41'08"							
C21	25.00	43.31	29.41	38.10	N49°48'07"E	99°15'56"							
C22	25.00	39.57	25.30	35.57	S45°10'26"E	90°41'08"							
C23	25.00	36.26	22.16	33.17	N41°23'00"W	83°06'17"							
C24	25.00	38.97	24.70	35.14	S44°49'34"W	89°18'52"							
C25	25.00	38.97	24.70	35.14	N44°49'34"E	89°18'52"							
C26	25.00	39.57	25.30	35.57	N45°10'26"W	90°41'08"							
C27	25.00	29.99	15.50	21.99	S63°59'11"E	83°14'42"							
C28	25.00	17.58	9.17	17.22	S63°59'11"E	40°17'40"							
C29	50.00	32.56	16.88	31.99	N38°48'02"W	37°18'45"							
C30	50.00	41.99	22.32	40.77	N81°31'03"W	48°07'16"							
C31	50.00	45.30	24.34	43.77	S48°27'51"W	51°54'55"							
C32	50.00	39.80	21.02	38.76	S00°17'55"E	45°36'37"							
C33	50.00	42.82	22.82	41.52	S47°38'14"E	49°04'01"							
C34	25.00	36.90	19.34	36.07	N86°24'10"E	42°17'11"							
C35	25.00	15.07	7.77	14.85	S89°14'28"E	34°32'51"							
C36	25.00	5.50	2.76	5.49	N73°36'19"W	12°36'32"							
C37	474.00	19.08	9.54	19.08	S68°27'14"E	21°8'23"							
C38	526.00	18.14	9.07	18.14	S68°17'20"E	1°58'34"							
C39	526.00	3.03	1.52	3.03	S69°26'31"E	0°19'49"							
C40	324.00	49.80	24.95	49.75	S76°09'44"E	8°48'22"							
C41	324.00	46.82	23.45	46.78	S87°37'09"E	8°16'50"							
C42	1442.00	60.19	30.10	60.19	N65°40'48"W	1°00'18"							
C43	1442.00	60.19	30.10	60.19	N65°40'48"W	2°23'19"							
C44	1442.00	60.19	30.10	60.19	N68°04'07"W	2°23'09"							
C45	1442.00	60.00	30.01	60.00	N70°27'12"W	2°23'03"							
C46	1442.00	60.07	30.04	60.06	N72°50'20"W	2°23'12"							
C47	1442.00	60.24	30.12	60.23	N75°13'43"W	2°23'36"							
C48	1442.00	45.07	22.54	45.07	N77°19'14"W	1°42'27"							
C49	25.00	15.77	8.16	15.51	S60°08'28"E	36°09'03"							
C50	25.00	7.69	3.87	7.65	S33°19'52"E	17°38'06"							
C51	50.00	43.49	23.23	42.14	N49°23'01"W	49°50'25"							
C52	50.00	44.96	24.13	43.46	S79°56'11"W	51°31'10"							
C53	50.00	42.99	22.92	41.68	S29°32'48"W	49°15'35"							
C54	50.00	46.93	25.35	45.23	S21°58'18"E	53°46'38"							
C55	50.00	53.79	29.83	51.24	S79°40'56"E	61°38'38"							
C56	50.00	6.46	3.23	6.46	N65°47'40"E	7°24'11"							
C57	25.00	17.09	8.69	16.76	S81°40'27"W	39°09'46"							
C58	1390.09	40.95	20.47	40.94	N77°54'02"W	1°11'11"							
C59	1390.09	60.29	30.15	60.29	N75°48'51"W	2°29'06"							
C60	1390.09	60.09	30.05	60.09	N73°19'59"W	2°28'37"							
C61	1390.09	60.01	30.01	60.00	N70°51'29"W	2°28'24"							
C62	1390.09	60.04	30.02	60.03	N68°23'03"W	2°28'28"							
C63	1390.09	60.17	30.09	60.17	N65°54'24"W	2°28'49"							
C64	1390.09	28.82	14.41	28.82	N64°04'22"W	1°11'16"							
C65	376.00	30.50	15.25	30.19	S65°42'28"E	4°04'12"							
C66	376.00	57.66	28.89	57.60	S61°31'10"E	8°47'09"							
C67	376.00	39.53	19.78	39.51	S79°55'27"E	8°01'24"							
C68	100.00	1.20	0.60	1.20	N89°49'34"E	0°41'08"							
C69	100.00	35.30	17.83	35.11	S79°43'09"E	20°13'26"							
C70	350.00	165.16	84.15	163.64	S76°59'52"E	27°02'16"							
C71	1416.09	424.40	213.80	422.82	N72°03'53"W	17°10'18"							
C72	800.00	159.79	79.89	159.59	N89°32'24"E	8°06'49"							
C73	979.00	167.79	84.10	167.59	S34°44'28"E	9°49'17"							
C74	1020.00	144.22	72.23	144.10	N08°31'11"W	8°06'04"							
C75	984.00	123.88	62.02	123.80	N08°16'29"W	7°14'34"							
C76	990.00	167.81	84.10	167.61	S04°40'02"E	9°40'21"							
C77	1131.00	223.06	111.90	222.70	N05°28'52"W	11°18'01"							
C78	869.00	89.16	44.52	88.72	S08°11'32"E	5°52'42"							
C80	1244.00	126.15	63.13	125.10	N82°28'18"W	5°48'37"							
C81	826.00	40.01	20.01	40.00	S88°59'51"E	2°46'30"							
C82	500.00	20.13	10.07	20.13	S68°27'14"E	2°18'23"							
C83	1244.00	76.75	38.39	76.74	N04°33'34"W	3°32'06"							
C84	1244.00	49.40	24.70	49.40	N01°39'15"W	2°16'31"							



1. THIS TRACT LIES WITHIN FLOOD HAZARD ZONE "C" AS DESIGNATED BY THE F.I.R.M. FLOOD INSURANCE RATE MAP, CITY OF EL PASO, OCTOBER 15, 1982, PANEL NUMBER 480214 0046 B.

2. VEHICULAR ACCESS TO THOSE LOTS ABUTTING SUN FIRE BLVD. SHALL BE THROUGH OTHER DEDICATED STREETS ONLY. THE INSTRUMENT ASSURING RELEASE OF ACCESS IS FILED IN THE OFFICE OF THE COUNTY CLERK, DEED AND RECORD SECTION, INSTRUMENT No. 200141361, BOOK PAGE.

3. THIS IS TO CERTIFY THAT WATER AND SEWER SERVICES WILL BE PROVIDED TO SUN RIDGE UNIT NINE, REPLAT A BY THE EL PASO WATER UTILITIES/PUBLIC SERVICE BOARD IN ACCORDANCE WITH THEIR RULES AND REGULATIONS AND WITH SECTION 16.343 OF THE TEXAS WATER CODE. WATER AND SEWER SERVICES WILL BE EXTENDED TO THE SUBDIVISION FROM EXISTING FACILITIES LOCATED ON SUN QUEST ST. AND CRYSTAL RIDGE DRIVE, AND WILL BE CONSTRUCTED TO SERVE THE SUBDIVISION WITHIN 2 YEARS OF THE DATE OF FILING THIS PLAT.

4. TAX CERTIFICATE(S) FOR THIS SUBDIVISION ARE FILED IN THE OFFICE OF THE COUNTY CLERK, DEED AND RECORDS SECTION, INSTRUMENT No. 20010047346, BOOK PAGE, DATE 6-29-01.

5. ALL CORNERS TO BE MARKED ON GROUND WITH 5/8" DIA. REBAR WITH CAP STAMPED TX 4297 NM 10472 IMMEDIATELY AFTER SITE GRADING IS COMPLETED.

SUNRIDGE SUBDIVISION UNIT 7

LEGEND

- EXISTING CITY MONUMENT
- PROPOSED CITY MONUMENT
- APPROXIMATE LOCATION OF PROPOSED NDCBU

6. RESTRICTIVE COVENANTS FOR THIS SUBDIVISION ARE FILED IN THE OFFICE OF THE COUNTY CLERK, DEEDS AND RECORDS SECTION, INSTRUMENT No. 20010047366, BOOK PAGE, DATE 6-2-01.

PASO DEL NORTE SURVEYING, INC.
PROFESSIONAL LAND SURVEYORS
6139 NORTHWESTERN, SUITE 211
EL PASO, TX 79925
915-771-0247

CSA CONSULTING ENGINEERS
1845 NORTHWESTERN, SUITE C
EL PASO, TX 79912
915-877-4155

OWNER
EL PASO SUNRIDGE L.P.
4487 N. MEZA, SUITE 201
EL PASO, TX 79902
915-533-7900

DEDICATION

STATE OF TEXAS:
COUNTY OF EL PASO:

EL PASO/SUNRIDGE LIMITED PARTNERSHIP, a Texas Limited Partnership, owners of this land, hereby present this plat and dedicate if not previously dedicated, to the use of the public the street rights-of-way, ponding area, drives, & utility easements as hereon laid down and designated, including easements for overhead services wires for pole type utilities, and buried service wires, conduits and pipes for underground utilities, and the right to ingress and egress for service and construction and the right to trim interfering trees and shrubs.

EL PASO/SUNRIDGE LIMITED PARTNERSHIP

C. HANSON, Managing Partner

ACKNOWLEDGMENT

STATE OF TEXAS:
COUNTY OF EL PASO:

This instrument was acknowledged before me this 15th day of May, 2001 by JOE G. HANSON, as Managing Partner of El Paso/Sunridge Limited Partnership.

Nelda Rodriguez
Notary Public in and for El Paso County, Texas
My Commission expires 12-16-2002

CITY PLAN COMMISSION

This subdivision is hereby approved as to the platting and as to the conditions of the dedication in accordance with Chapter 212 of the Local Government Code of Texas this 18th day of May, 2000 A.D.

Patricia Adauto, Executive Secretary
Approved for filing on 15th day of JUNE, 2001 A.D.
John Williams, Deputy Director for Building Services

FILING

Filed and recorded in the office of the County Clerk of El Paso County, Texas this 21st day of June, 2001 in Volume 76 of the Plat Record, Page 61. File No. 20010047365

Helen Amy J. County Clerk

Subdivision improvement plans prepared by and under the supervision of CSA Consulting Engineers

John C. Kallus, Project Manager
Registered Professional Engineer
Texas License No. 53878

John C. Kallus, Project Manager
Registered Professional Engineer
Texas License No. 53878

Stephen Earl Cobb, R.P.L.S. 4297