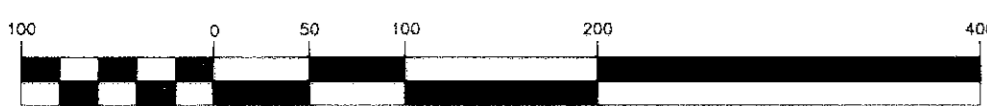


GRAPHIC SCALE



(IN FEET)
1 inch = 100 ft.

LOMA VERDE DRIVE

RANCHOS DEL SOL

UNIT FOUR

CORRECTION PLAT

BEING THE CORRECTION OF ALL OF RANCHOS DEL SOL UNIT FOUR
SAVE AND EXCEPT LOTS 19 AND 23, BLOCK 7
CITY OF EL PASO, EL PASO COUNTY, TEXAS

CONTAINING IN ALL
1,954,243.99 SQUARE FEET OR 44.8632 ACRES MORE OR LESS

DEDICATION

STATE OF TEXAS
COUNTY OF EL PASO

LOOP 375, L.P. A TEXAS PARTNERSHIP, JOE G. HANSON MANAGING PARTNER HEREBY PRESENT THIS MAP AND DEDICATE TO THE USE OF THE PUBLIC, THE STREETS, DRIVES, RETENTION POND, DRAINAGE RIGHTS-OF-WAY, DRAINAGE EASEMENTS AND UTILITY EASEMENTS AND SOUTHWESTERN BELL TELEPHONE EASEMENT AS HEREON LAID DOWN AND DESIGNATED, INCLUDING EASEMENTS FOR OVERHANG OF SERVICE WIRES, FOR POLE TYPE UTILITIES, AND BURIED SERVICE WIRES, CONDUITS AND PIPES FOR UNDERGROUND UTILITIES, AND THE RIGHT TO INGRESS AND EGRESS FOR SERVICE AND CONSTRUCTIONS AND THE RIGHT TO TRIM INTERFERING TREES AND SHRUBS.

S/ JOE G. HANSON
JOE G. HANSON, MANAGING PARTNER

ACKNOWLEDGEMENT

STATE OF TEXAS
COUNTY OF EL PASO

BEFORE ME, THE UNDERSIGNED AUTHORITY, ON THIS DAY PERSONALLY APPEARED JOE G. HANSON, MANAGING PARTNER KNOWN TO ME TO BE THE PERSONS WHOSE NAME IS SUBSCRIBED TO THE FOREGOING INSTRUMENT, AND ACKNOWLEDGED TO ME THAT HE EXECUTED THE SAME FOR THE PURPOSES AND CONSIDERATIONS THEREIN STATED.

GIVEN UNDER MY HAND AND SEAL THIS 26th DAY OF SEPTEMBER 1995 A.D.

S/ GLORIA PORTUGAL
NOTARY PUBLIC IN AND FOR EL PASO COUNTY, TEXAS
MY COMMISSION EXPIRES JANUARY 16, 1996

CITY PLAN COMMISSION

THIS SUBDIVISION IS HEREBY APPROVED AS TO THE PLATTING AND AS TO THE CONDITIONS OF THE DEDICATION IN ACCORDANCE WITH CHAPTER 212 OF THE LOCAL GOVERNMENT CODE OF TEXAS THIS 8th DAY OF SEPTEMBER 1994 A.D.

S/ ALBERT OLVERA
ACTING SECRETARY

S/ MARK DYER
CHAIRPERSON

ACCEPTED AND ADOPTED BY THE CITY COUNCIL OF EL PASO THIS 17th DAY OF JANUARY 1995 A.D.

S/ CAROLE HUNTER
CITY CLERK

S/ LARRY FRANCIS
MAYOR

APPROVED FOR FILING THIS 27th DAY OF SEPTEMBER 1995 A.D.

S/ FERMIN DORADO
CITY ENGINEER

FILING

FILED AND RECORDED IN THE OFFICE OF THE COUNTY CLERK OF EL PASO COUNTY, TEXAS THIS 5th DAY OF OCTOBER 1995 A.D. IN VOLUME 70 OF THE PLAT RECORDS, PAGE 52 FILE NO. 95-64860

S/ HECTOR ENRIQUEZ JR.
COUNTY CLERK

S/ IRMA R. VALENZUELA
BY DEPUTY

PREPARED BY AND UNDER THE SUPERVISION OF BRADLEY ROE, REGISTERED PROFESSIONAL ENGINEER No. 31886, REGISTERED PUBLIC LAND SURVEYOR No. 2449

S/ BRADLEY ROE
BRADLEY ROE, P.E., R.P.L.S.

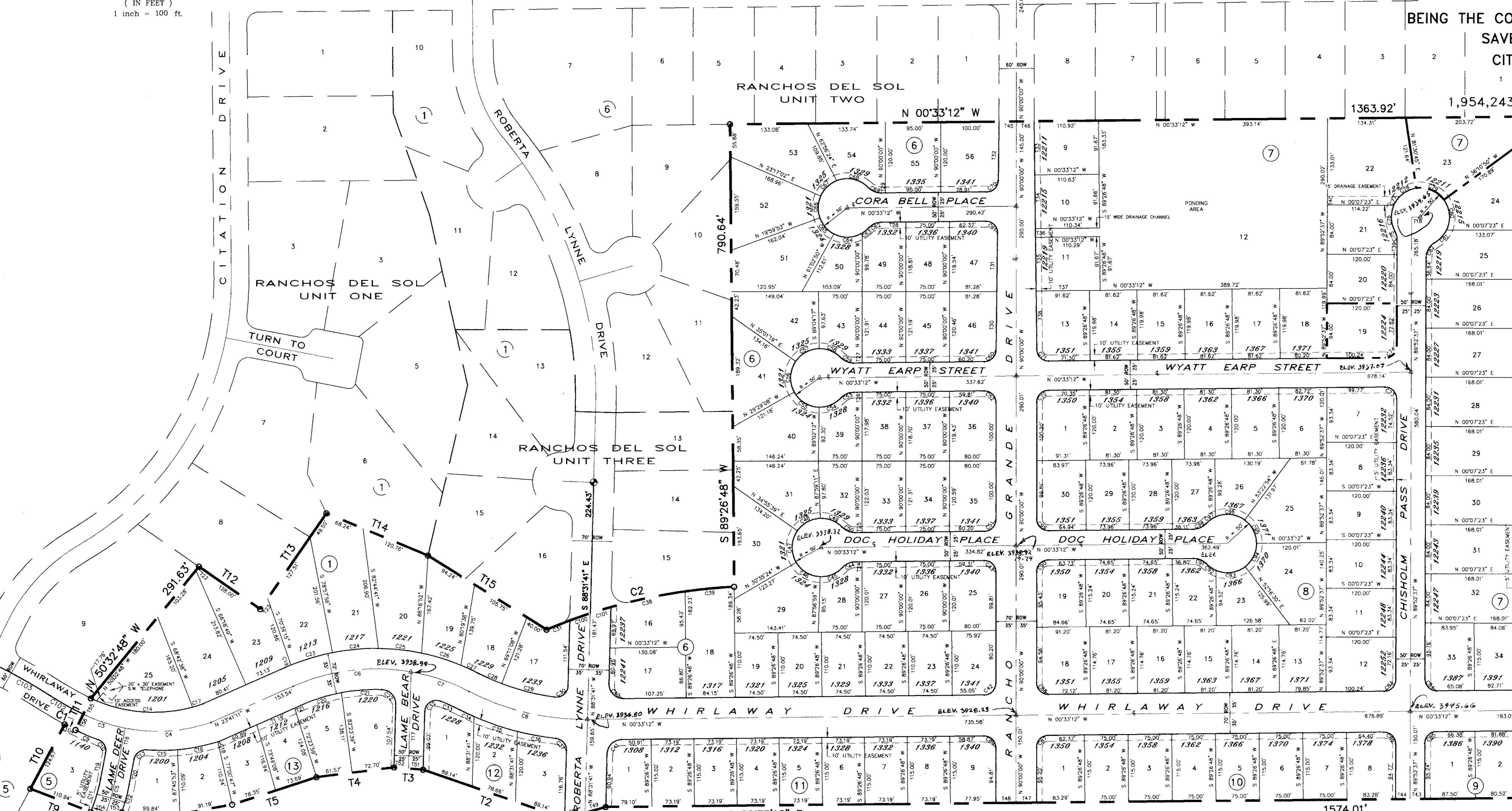
NOTES:

- SIDEWALKS FOR ALL STREETS WITHIN AND ABUTTING THIS SUBDIVISION WILL BE PROVIDED.
- RESTRICTIVE COVENANTS FOR THIS SUBDIVISION ARE FILED IN THE OFFICE OF THE COUNTY CLERK, DEED AND RECORD SECTION, INSTRUMENT NO. 95-20253 BOOK _____ PAGE _____ DATE 4-11-95.

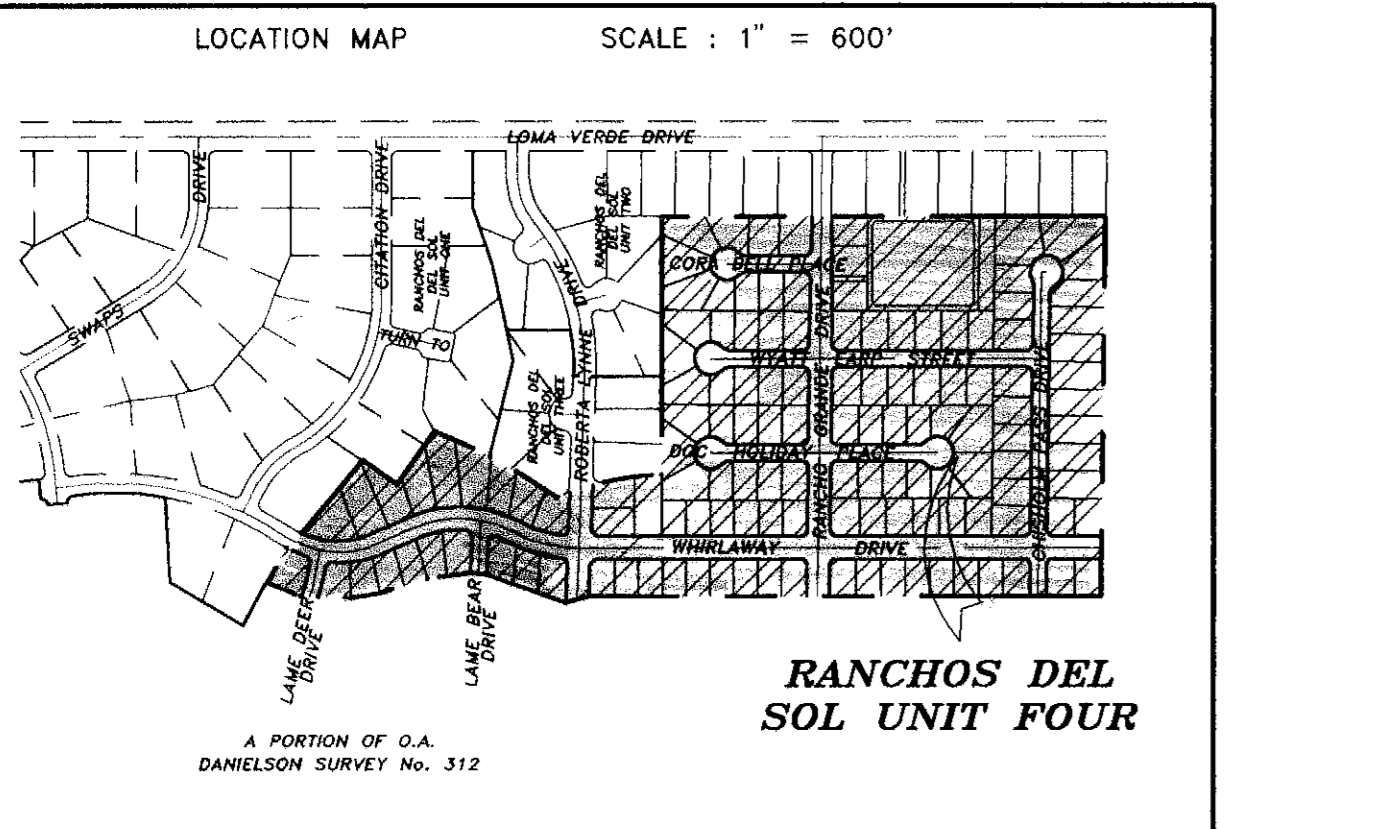
LEGEND

- ⊕ = DENOTES EXISTING CITY MONUMENT
- △ = DENOTES PROPOSED CITY MONUMENT

FILING MAP



CURVE	RADIUS	LENGTH	TANGENT	CHORD	BEARING	DELTA
C1	643.00	21.00	10.50	21.00	N 00°00'00" E	0°00'00"
C2	850.00	331.68	167.50	330.00	S 75°00'00" E	20°00'00"
C3	1000.00	148.47	74.24	148.47	N 00°00'00" E	0°00'00"
C4	280.00	106.33	53.17	106.33	S 89°26'48" W	29°31'54"
C5	338.68	56.87	27.90	56.87	N 74°01'32" W	09°51'22"
C6	352.60	207.01	103.50	204.00	S 06°07'00" E	33°00'00"
C7	352.60	106.33	53.17	106.33	S 89°26'48" W	29°31'54"
C8	437.83	211.12	105.56	208.58	N 13°15'00" E	27°31'54"
C9	324.89	41.74	20.87	41.74	N 23°15'00" E	07°21'42"
C10	200.00	28.44	14.22	28.44	S 89°26'48" W	29°31'54"
C11	200.00	28.44	14.22	28.44	S 89°26'48" W	29°31'54"
C12	384.88	49.71	24.86	49.71	N 75°00'00" E	07°48'00"
C13	200.00	28.44	14.22	28.44	S 89°26'48" W	29°31'54"
C14	255.16	178.63	89.32	175.00	N 04°32'48" E	40°00'00"
C15	324.89	41.74	20.87	41.74	N 23°15'00" E	07°21'42"
C16	324.89	41.74	20.87	41.74	N 23°15'00" E	07°21'42"
C17	255.16	178.63	89.32	175.00	N 04°32'48" E	40°00'00"
C18	352.60	106.33	53.17	106.33	S 89°26'48" W	29°31'54"
C19	384.88	49.71	24.86	49.71	N 75°00'00" E	07°48'00"
C20	352.60	106.33	53.17	106.33	S 89°26'48" W	29°31'54"
C21	352.60	106.33	53.17	106.33	S 89°26'48" W	29°31'54"
C22	402.93	43.98	21.99	43.98	N 23°15'00" E	07°21'42"
C23	402.93	43.98	21.99	43.98	N 23°15'00" E	07°21'42"
C24	384.88	49.71	24.86	49.71	N 75°00'00" E	07°48'00"
C25	352.60	106.33	53.17	106.33	S 89°26'48" W	29°31'54"
C26	352.60	106.33	53.17	106.33	S 89°26'48" W	29°31'54"
C27	352.60	106.33	53.17	106.33	S 89°26'48" W	29°31'54"
C28	352.60	106.33	53.17	106.33	S 89°26'48" W	29°31'54"
C29	352.60	106.33	53.17	106.33	S 89°26'48" W	29°31'54"
C30	352.60	106.33	53.17	106.33	S 89°26'48" W	29°31'54"
C31	352.60	106.33	53.17	106.33	S 89°26'48" W	29°31'54"
C32	352.60	106.33	53.17	106.33	S 89°26'48" W	29°31'54"
C33	352.60	106.33	53.17	106.33	S 89°26'48" W	29°31'54"
C34	352.60	106.33	53.17	106.33	S 89°26'48" W	29°31'54"
C35	352.60	106.33	53.17	106.33	S 89°26'48" W	29°31'54"
C36	352.60	106.33	53.17	106.33	S 89°26'48" W	29°31'54"
C37	352.60	106.33	53.17	106.33	S 89°26'48" W	29°31'54"
C38	352.60	106.33	53.17	106.33	S 89°26'48" W	29°31'54"
C39	352.60	106.33	53.17	106.33	S 89°26'48" W	29°31'54"
C40	352.60	106.33	53.17	106.33	S 89°26'48" W	29°31'54"
C41	352.60	106.33	53.17	106.33	S 89°26'48" W	29°31'54"
C42	352.60	106.33	53.17	106.33	S 89°26'48" W	29°31'54"
C43	352.60	106.33	53.17	106.33	S 89°26'48" W	29°31'54"
C44	352.60	106.33	53.17	106.33	S 89°26'48" W	29°31'54"
C45	352.60	106.33	53.17	106.33	S 89°26'48" W	29°31'54"
C46	352.60	106.33	53.17	106.33	S 89°26'48" W	29°31'54"
C47	352.60	106.33	53.17	106.33	S 89°26'48" W	29°31'54"
C48	352.60	106.33	53.17	106.33	S 89°26'48" W	29°31'54"
C49	352.60	106.33	53.17	106.33	S 89°26'48" W	29°31'54"
C50	352.60	106.33	53.17	106.33	S 89°26'48" W	29°31'54"
C51	352.60	106.33	53.17	106.33	S 89°26'48" W	29°31'54"
C52	352.60	106.33	53.17	106.33	S 89°26'48" W	29°31'54"



A PORTION OF G.A. DANIELSON SURVEY NO. 312

roe & associates
EL PASO, TEXAS

W.D. 020894-3
FILE NAME: R054_COR
PREPARATION DATE: MARCH 23, 1994
REVISED DATE: SEPTEMBER 22, 1995