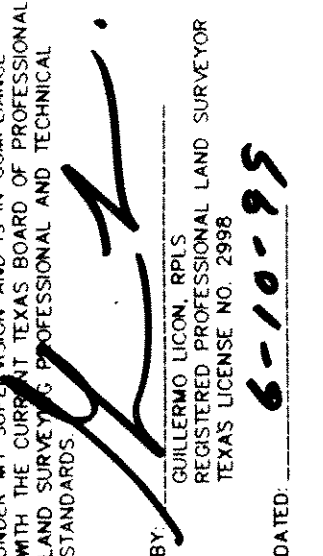
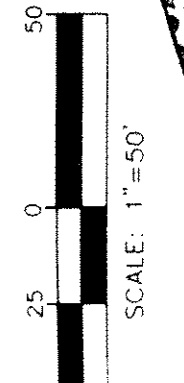
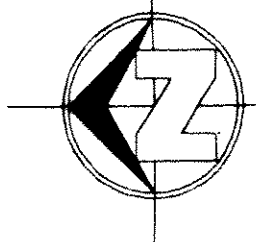


# OASIS RANCH

ALL OF TRACTS 1B1, 1C AND 2, SECTION 36 AND  
ALL OF TRACTS 2, 3 AND 7, SECTION 37, BLOCK 80,  
TOWNSHIP 2, TEXAS AND PACIFIC RAILROAD COMPANY SURVEY,  
CITY OF EL PASO, EL PASO COUNTY,  
TEXAS

CONTAINING: 39.019 ACRES  
**SHEET 3 OF 3**

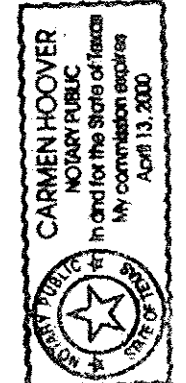


THIS IS TO CERTIFY THAT THIS PLAN REPRESENTS  
AN ACTUAL FIELD SURVEY MADE ON THE GROUND  
WITH THE CURVED TEXAS BOARD OF PROFESSIONAL  
LAND SURVEYORS' PROFESSIONAL AND TECHNICAL  
STAMPING.

BY  
**CARMEN HOOPER**  
REGISTERED PROFESSIONAL LAND SURVEYOR  
TEXAS LICENSE NO. 2998  
DATED: **6-10-95**

ACKNOWLEDGMENT

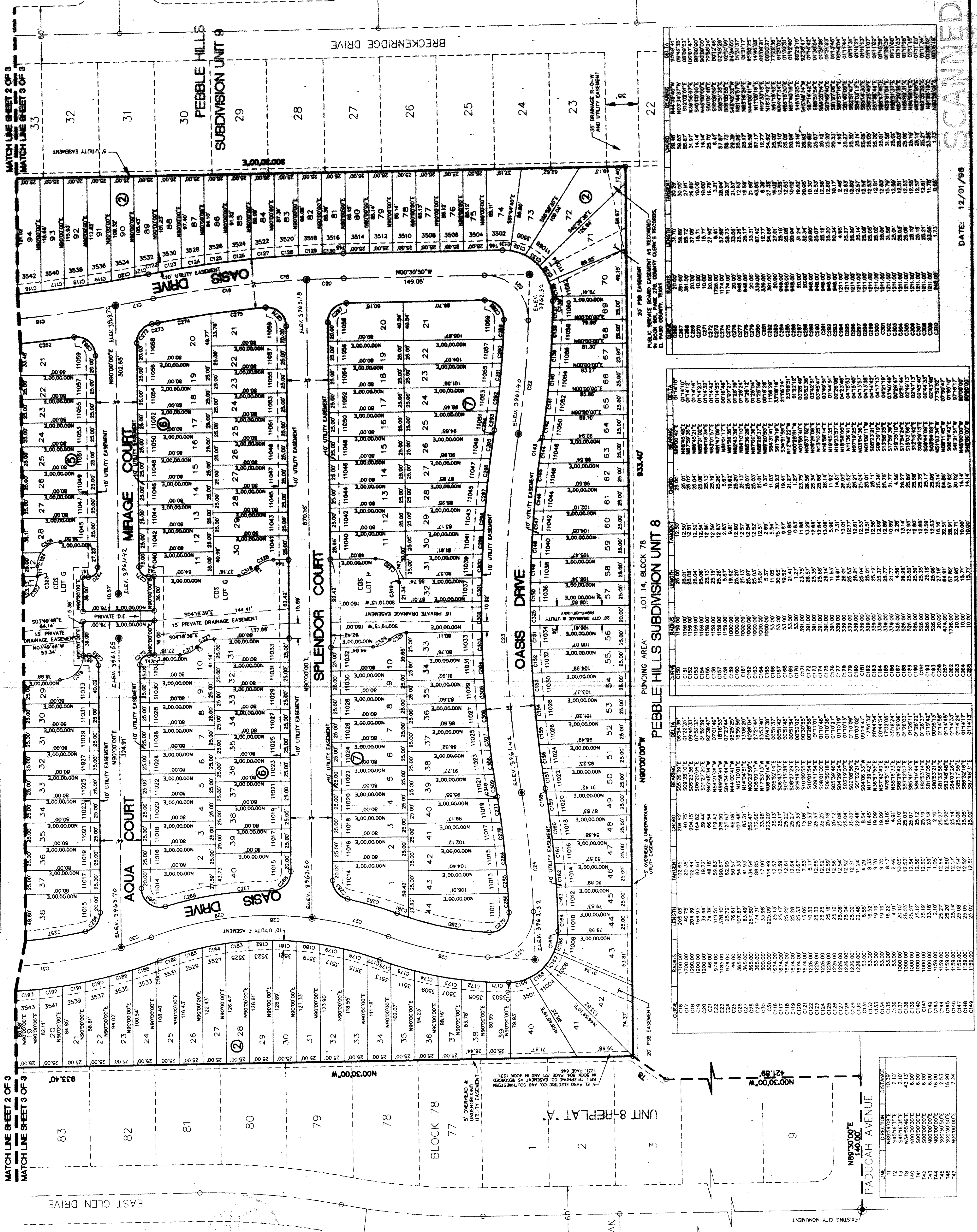
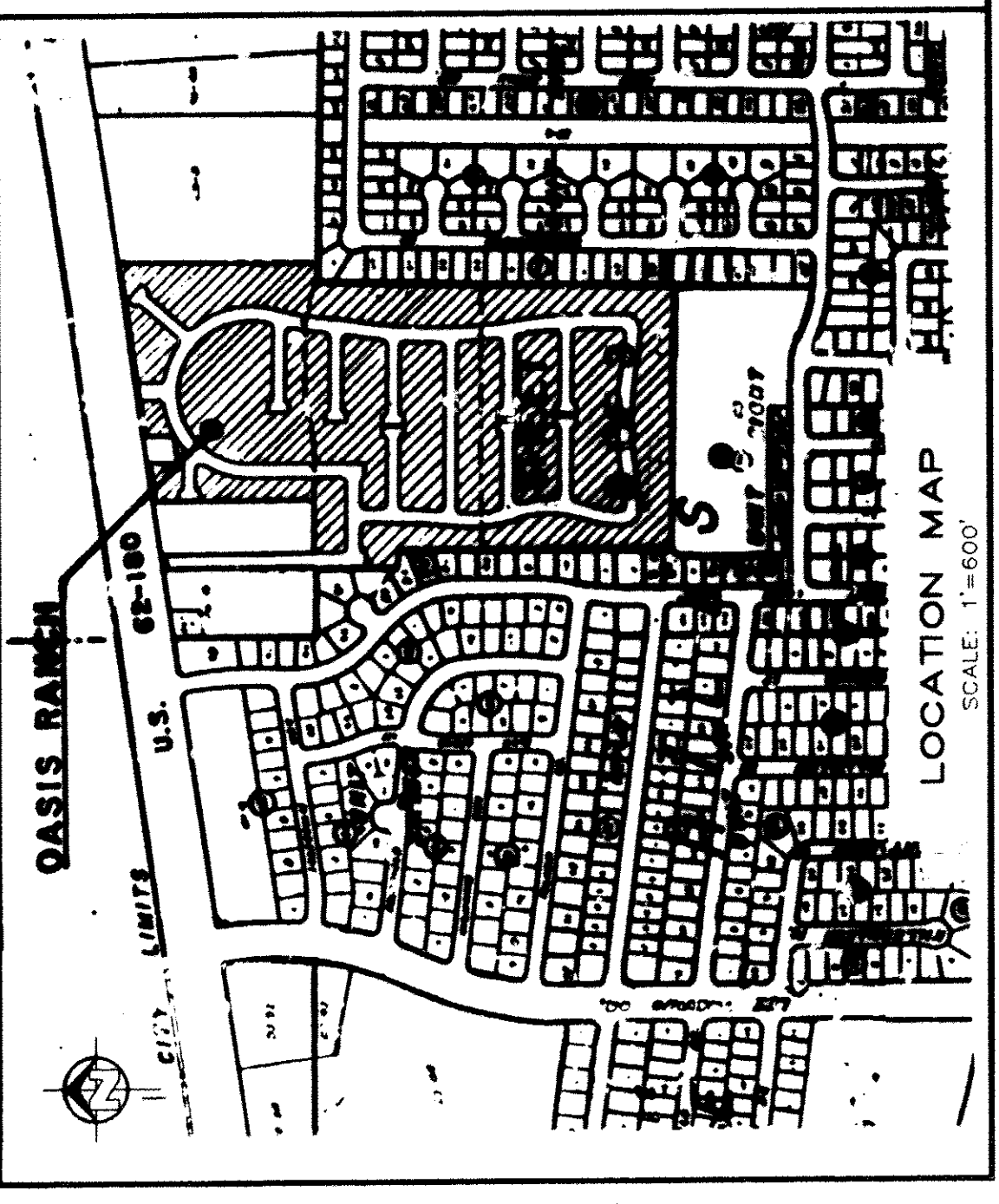
THIS INSTRUMENT WAS PREPARED BEFORE ME ON  
**June 10, 1999** BY  
**Carmen Hoover**  
NOTARY PUBLIC, STATE OF TEXAS  
MY COMMISSION EXPIRES **4-13-2000**



RESTRICTIVE COVENANTS FOR THIS SUBDIVISION ARE FILED IN THE OFFICE OF THE  
COUNTY CLERK, DEED AND RECORD SECTION, INSTRUMENT NO. \_\_\_\_\_  
BOOK \_\_\_\_\_ PAGE \_\_\_\_\_ DATE \_\_\_\_\_

**LEGEND**  
● = PROPOSED CITY MONUMENT

**SLI ENGINEERS, INC.**  
CIVIL ENGINEERS - LAND SURVEYORS  
LAND SURVEYING AND SITE DEVELOPMENT  
1600 WESTERN DRIVE, SUITE 100, EL PASO, TEXAS 79902  
BUSINESS (915) 584-4457 FAX (915) 581-7756



CURVE	RADIUS	LENGTH	AREA	PERCENT
C317	25.00'	18.84'	10.36'	5.20%
C318	25.00'	19.84'	11.36'	5.60%
C319	25.00'	20.84'	12.36'	5.90%
C320	25.00'	21.84'	13.36'	6.20%
C321	25.00'	22.84'	14.36'	6.50%
C322	25.00'	23.84'	15.36'	6.80%
C323	25.00'	24.84'	16.36'	7.10%
C324	25.00'	25.84'	17.36'	7.40%
C325	25.00'	26.84'	18.36'	7.70%
C326	25.00'	27.84'	19.36'	8.00%
C327	25.00'	28.84'	20.36'	8.30%
C328	25.00'	29.84'	21.36'	8.60%
C329	25.00'	30.84'	22.36'	8.90%
C330	25.00'	31.84'	23.36'	9.20%

20' PSB EASEMENT AS RECORDED IN PUBLIC SURVEY COUNTY CLERK'S RECORDS, EL PASO COUNTY, TEXAS

LINE	BEARING	DISTANCE	AREA
C1	N 89° 59' 59" W	100.00'	100.00'
C2	S 89° 59' 59" W	100.00'	100.00'
C3	S 89° 59' 59" W	100.00'	100.00'
C4	N 89° 59' 59" W	100.00'	100.00'
C5	N 89° 59' 59" W	100.00'	100.00'
C6	S 89° 59' 59" W	100.00'	100.00'
C7	S 89° 59' 59" W	100.00'	100.00'
C8	N 89° 59' 59" W	100.00'	100.00'
C9	N 89° 59' 59" W	100.00'	100.00'
C10	S 89° 59' 59" W	100.00'	100.00'
C11	S 89° 59' 59" W	100.00'	100.00'
C12	N 89° 59' 59" W	100.00'	100.00'
C13	N 89° 59' 59" W	100.00'	100.00'
C14	S 89° 59' 59" W	100.00'	100.00'
C15	S 89° 59' 59" W	100.00'	100.00'
C16	N 89° 59' 59" W	100.00'	100.00'
C17	N 89° 59' 59" W	100.00'	100.00'
C18	S 89° 59' 59" W	100.00'	100.00'
C19	S 89° 59' 59" W	100.00'	100.00'
C20	N 89° 59' 59" W	100.00'	100.00'
C21	N 89° 59' 59" W	100.00'	100.00'
C22	S 89° 59' 59" W	100.00'	100.00'
C23	S 89° 59' 59" W	100.00'	100.00'
C24	N 89° 59' 59" W	100.00'	100.00'
C25	N 89° 59' 59" W	100.00'	100.00'
C26	S 89° 59' 59" W	100.00'	100.00'
C27	S 89° 59' 59" W	100.00'	100.00'
C28	N 89° 59' 59" W	100.00'	100.00'
C29	N 89° 59' 59" W	100.00'	100.00'
C30	S 89° 59' 59" W	100.00'	100.00'
C31	S 89° 59' 59" W	100.00'	100.00'
C32	N 89° 59' 59" W	100.00'	100.00'
C33	N 89° 59' 59" W	100.00'	100.00'
C34	S 89° 59' 59" W	100.00'	100.00'
C35	S 89° 59' 59" W	100.00'	100.00'
C36	N 89° 59' 59" W	100.00'	100.00'
C37	N 89° 59' 59" W	100.00'	100.00'
C38	S 89° 59' 59" W	100.00'	100.00'
C39	S 89° 59' 59" W	100.00'	100.00'
C40	N 89° 59' 59" W	100.00'	100.00'
C41	N 89° 59' 59" W	100.00'	100.00'
C42	S 89° 59' 59" W	100.00'	100.00'
C43	S 89° 59' 59" W	100.00'	100.00'
C44	N 89° 59' 59" W	100.00'	100.00'
C45	N 89° 59' 59" W	100.00'	100.00'
C46	S 89° 59' 59" W	100.00'	100.00'
C47	S 89° 59' 59" W	100.00'	100.00'
C48	N 89° 59' 59" W	100.00'	100.00'
C49	N 89° 59' 59" W	100.00'	100.00'
C50	S 89° 59' 59" W	100.00'	100.00'
C51	S 89° 59' 59" W	100.00'	100.00'
C52	N 89° 59' 59" W	100.00'	100.00'
C53	N 89° 59' 59" W	100.00'	100.00'
C54	S 89° 59' 59" W	100.00'	100.00'
C55	S 89° 59' 59" W	100.00'	100.00'
C56	N 89° 59' 59" W	100.00'	100.00'
C57	N 89° 59' 59" W	100.00'	100.00'
C58	S 89° 59' 59" W	100.00'	100.00'
C59	S 89° 59' 59" W	100.00'	100.00'
C60	N 89° 59' 59" W	100.00'	100.00'
C61	N 89° 59' 59" W	100.00'	100.00'
C62	S 89° 59' 59" W	100.00'	100.00'
C63	S 89° 59' 59" W	100.00'	100.00'
C64	N 89° 59' 59" W	100.00'	100.00'
C65	N 89° 59' 59" W	100.00'	100.00'
C66	S 89° 59' 59" W	100.00'	100.00'
C67	S 89° 59' 59" W	100.00'	100.00'
C68	N 89° 59' 59" W	100.00'	100.00'
C69	N 89° 59' 59" W	100.00'	100.00'
C70	S 89° 59' 59" W	100.00'	100.00'
C71	S 89° 59' 59" W	100.00'	100.00'
C72	N 89° 59' 59" W	100.00'	100.00'
C73	N 89° 59' 59" W	100.00'	100.00'
C74	S 89° 59' 59" W	100.00'	100.00'
C75	S 89° 59' 59" W	100.00'	100.00'
C76	N 89° 59' 59" W	100.00'	100.00'
C77	N 89° 59' 59" W	100.00'	100.00'
C78	S 89° 59' 59" W	100.00'	100.00'
C79	S 89° 59' 59" W	100.00'	100.00'
C80	N 89° 59' 59" W	100.00'	100.00'
C81	N 89° 59' 59" W	100.00'	100.00'
C82	S 89° 59' 59" W	100.00'	100.00'
C83	S 89° 59' 59" W	100.00'	100.00'
C84	N 89° 59' 59" W	100.00'	100.00'
C85	N 89° 59' 59" W	100.00'	100.00'
C86	S 89° 59' 59" W	100.00'	100.00'
C87	S 89° 59' 59" W	100.00'	100.00'
C88	N 89° 59' 59" W	100.00'	100.00'
C89	N 89° 59' 59" W	100.00'	100.00'
C90	S 89° 59' 59" W	100.00'	100.00'
C91	S 89° 59' 59" W	100.00'	100.00'
C92	N 89° 59' 59" W	100.00'	100.00'
C93	N 89° 59' 59" W	100.00'	100.00'
C94	S 89° 59' 59" W	100.00'	100.00'
C95	S 89° 59' 59" W	100.00'	100.00'
C96	N 89° 59' 59" W	100.00'	100.00'
C97	N 89° 59' 59" W	100.00'	100.00'
C98	S 89° 59' 59" W	100.00'	100.00'
C99	S 89° 59' 59" W	100.00'	100.00'
C100	N 89° 59' 59" W	100.00'	100.00'

20' PSB EASEMENT AS RECORDED IN PUBLIC SURVEY COUNTY CLERK'S RECORDS, EL PASO COUNTY, TEXAS

LINE	BEARING	DISTANCE	AREA
C101	N 89° 59' 59" W	100.00'	100.00'
C102	S 89° 59' 59" W	100.00'	100.00'
C103	S 89° 59' 59" W	100.00'	100.00'
C104	N 89° 59' 59" W	100.00'	100.00'
C105	N 89° 59' 59" W	100.00'	100.00'
C106	S 89° 59' 59" W	100.00'	100.00'
C107	S 89° 59' 59" W	100.00'	100.00'
C108	N 89° 59' 59" W	100.00'	100.00'
C109	N 89° 59' 59" W	100.00'	100.00'
C110	S 89° 59' 59" W	100.00'	100.00'
C111	S 89° 59' 59" W	100.00'	100.00'
C112	N 89° 59' 59" W	100.00'	100.00'
C113	N 89° 59' 59" W	100.00'	100.00'
C114	S 89° 59' 59" W	100.00'	100.00'
C115	S 89° 59' 59" W	100.00'	100.00'
C116	N 89° 59' 59" W	100.00'	100.00'
C117	N 89° 59' 59" W	100.00'	100.00'
C118	S 89° 59' 59" W	100.00'	100.00'
C119	S 89° 59' 59" W	100.00'	100.00'
C120	N 89° 59' 59" W	100.00'	100.00'
C121	N 89° 59' 59" W	100.00'	100.00'
C122	S 89° 59' 59" W	100.00'	100.00'
C123	S 89° 59' 59" W	100.00'	100.00'
C124	N 89° 59' 59" W	100.00'	100.00'
C125	N 89° 59' 59" W	100.00'	100.00'
C126	S 89° 59' 59" W	100.00'	100.00'
C127	S 89° 59' 59" W	100.00'	100.00'
C128	N 89° 59' 59" W	100.00'	100.00'
C129	N 89° 59' 59" W	100.00'	100.00'
C130	S 89° 59' 59" W	100.00'	100.00'
C131	S 89° 59' 59" W	100.00'	100.00'
C132	N 89° 59' 59" W	100.00'	100.00'
C133	N 89° 59' 59" W	100.00'	100.00'
C134	S 89° 59' 59" W	100.00'	100.00'
C135	S 89° 59' 59" W	100.00'	100.00'
C136	N 89° 59' 59" W	100.00'	100.00'
C137	N 89° 59' 59" W	100.00'	100.00'
C138	S 89° 59' 59" W	100.00'	100.00'
C139	S 89° 59' 59" W	100.00'	100.00'
C140	N 89° 59' 59" W	100.00'	100.00'
C141	N 89° 59' 59" W	100.00'	100.00'
C142	S 89° 59' 59" W	100.00'	100.00'
C143	S 89° 59' 59" W	100.00'	100.00'
C144	N 89° 59' 59" W	100.00'	100.00'
C145	N 89° 59' 59" W	100.00'	100.00'
C146	S 89° 59' 59" W	100.00'	100.00'
C147	S 89° 59' 59" W	100.00'	100.00'
C148	N 89° 59' 59" W	100.00'	100.00'
C149	N 89° 59' 59" W	100.00'	100.00'
C150	S 89° 59' 59" W	100.00'	100.00'

DATE: 12/01/98

SCANNED  
OASIS RANCH 240