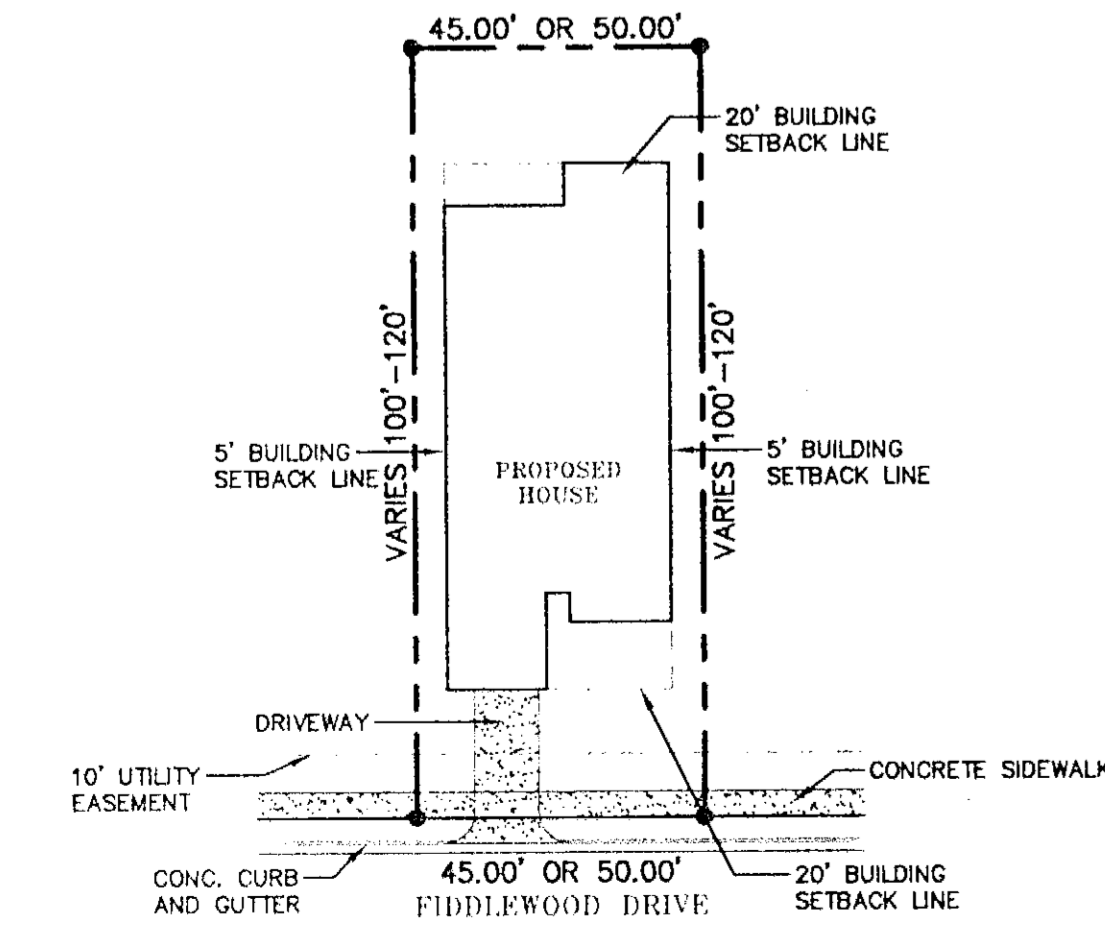
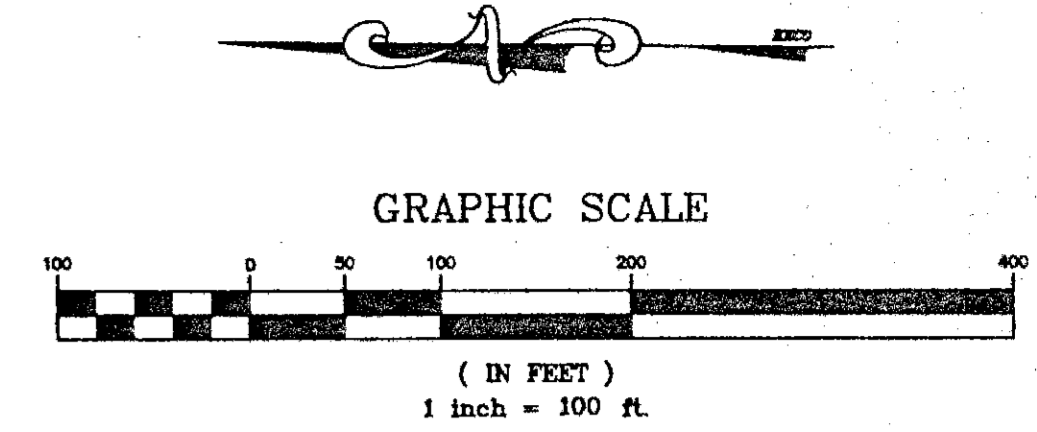
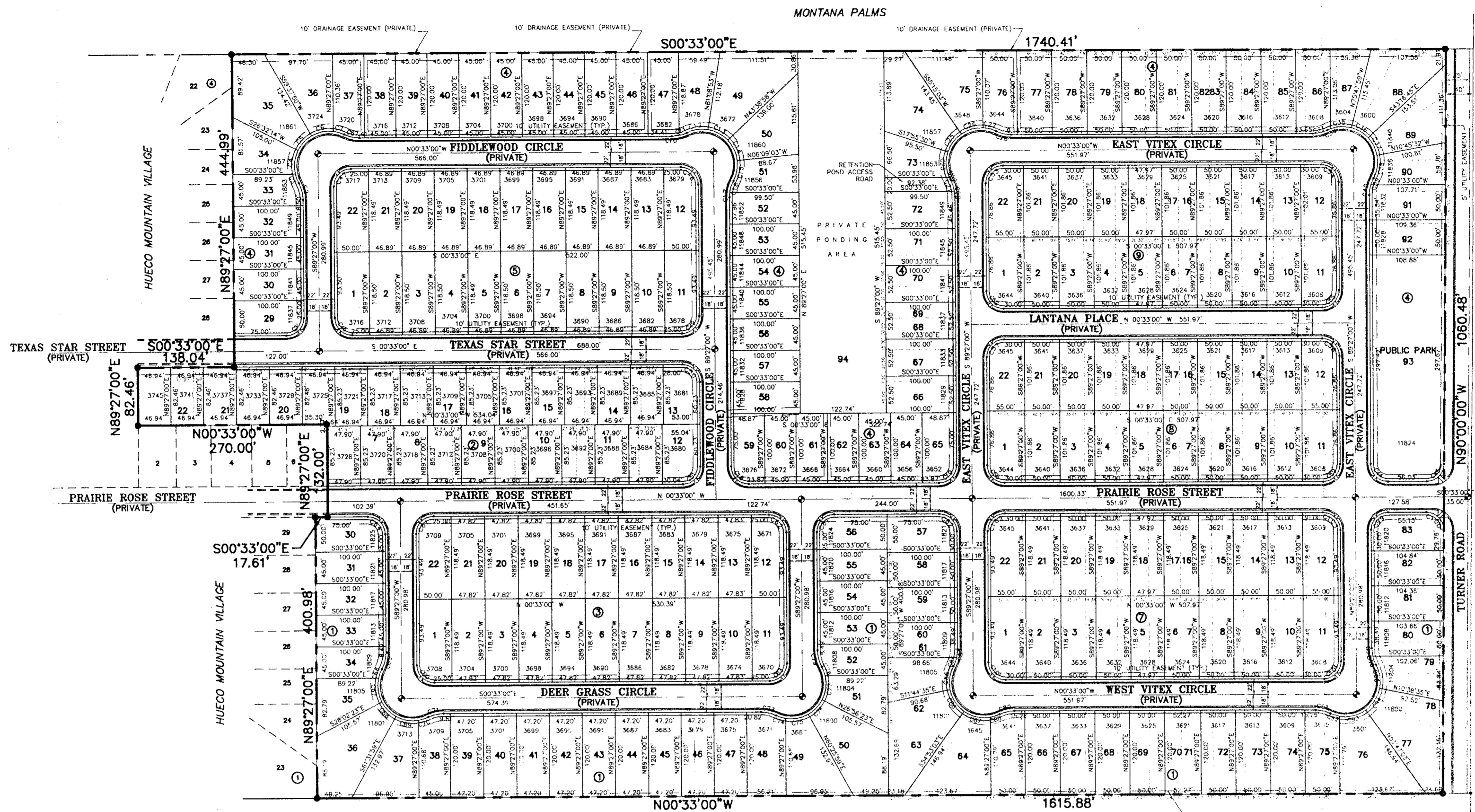
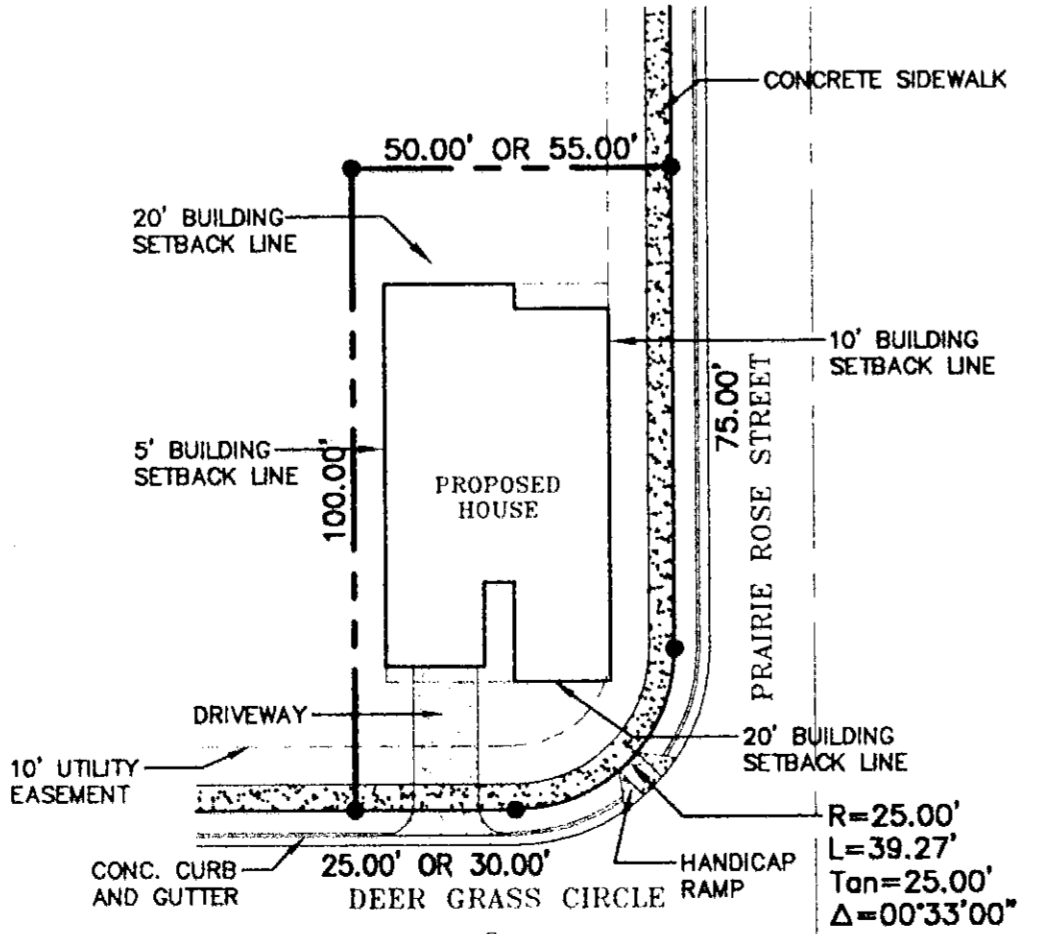


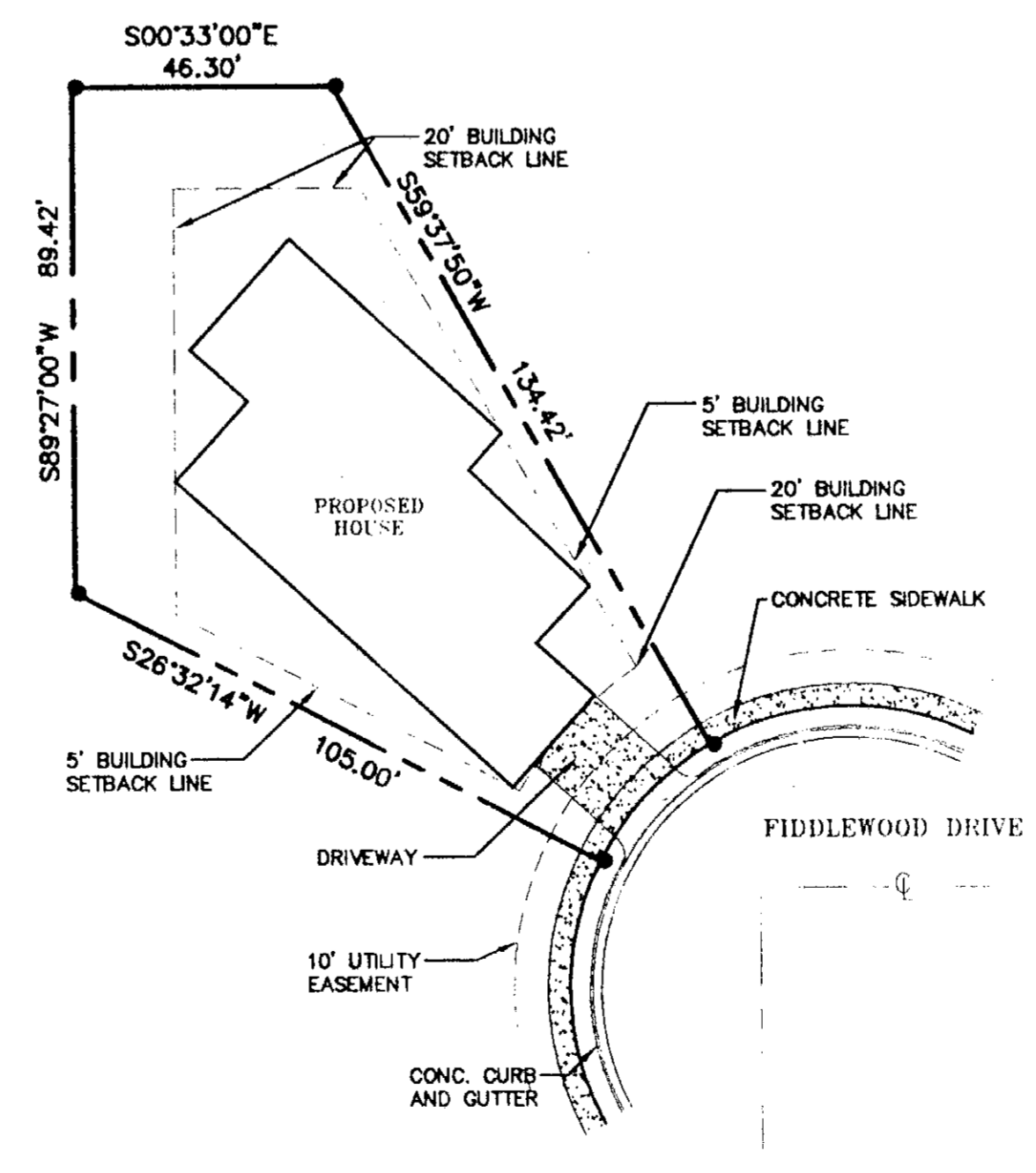
CURVE TABLE					
CURVE	LENGTH	RADIUS	DELTA	CH. BEARING	CHORD
C1	39.27	25.00	90°00'00"	S45°31'00"E	35.36
C2	24.74	50.00	28°21'14"	N75°16'23"E	24.49
C3	13.67	50.00	15°39'37"	S68°55'35"W	13.62
C4	34.72	50.00	39°46'51"	N83°21'11"W	34.02
C5	28.86	50.00	33°29'36"	N46°54'38"W	28.48
C6	32.03	50.00	40°42'28"	N12°00'50"W	31.42
C7	16.54	50.00	18°57'12"	N15°48'55"E	16.46
C8	22.55	50.00	25°50'31"	S12°22'15"W	22.36
C9	10.67	50.00	12°13'50"	S06°35'55"E	10.65
C10	11.88	50.00	13°36'41"	S10°35'10"E	11.85
C11	30.76	50.00	39°14'38"	N09°46'12"W	30.27
C12	32.72	50.00	37°29'55"	N27°36'07"E	32.14
C13	32.72	50.00	37°29'55"	N65°06'00"E	32.14
C14	32.72	50.00	37°29'55"	N81°24'00"E	32.14
C15	29.63	50.00	33°57'16"	S79°10'24"E	29.20
C16	17.68	50.00	20°15'24"	N72°19'28"W	17.59
C17	7.07	50.00	8°05'50"	N86°30'05"W	7.06
C18	39.27	25.00	90°00'00"	S44°27'00"W	35.36
C19	39.27	25.00	90°00'00"	S45°33'00"E	35.36
C20	7.07	50.00	8°05'50"	N81°24'00"E	7.06
C21	17.68	50.00	20°15'24"	N71°11'28"E	17.58
C22	3.68	50.00	4°12'47"	S83°12'10"W	3.68
C23	32.44	50.00	37°10'42"	S83°53'55"W	31.88
C24	32.44	50.00	37°10'42"	N58°55'23"W	31.88
C25	32.44	50.00	37°10'42"	N21°44'41"W	31.88
C26	24.89	50.00	28°21'14"	N17°03'09"E	24.67
C27	22.55	50.00	25°50'31"	S12°22'15"W	22.36
C28	22.55	50.00	25°50'31"	S13°28'15"E	22.36
C29	4.95	50.00	5°40'37"	N23°33'12"W	4.95
C30	30.47	50.00	34°54'55"	N03°16'26"W	30.00
C31	28.38	50.00	32°31'13"	N30°27'38"E	28.00
C32	28.38	50.00	32°31'13"	N62°48'51"E	28.00
C33	13.67	50.00	15°39'37"	S81°28'38"E	13.62
C34	10.07	50.00	11°32'28"	N67°57'58"W	10.05
C35	14.67	50.00	16°48'47"	N82°08'36"W	14.62
C36	39.27	25.00	90°00'00"	S44°27'00"W	35.36
C37	39.03	25.00	89°27'00"	S45°16'30"E	35.19
C38	39.27	25.00	90°00'00"	S44°27'00"W	35.36
C39	39.27	25.00	90°00'00"	N45°33'00"W	35.36
C40	39.27	25.00	90°00'00"	N44°27'00"E	35.36
C41	39.27	25.00	90°00'00"	S45°33'00"E	35.36
C42	39.27	25.00	90°00'00"	S44°27'00"W	35.36
C43	39.27	25.00	90°00'00"	N45°33'00"W	35.36
C44	39.27	25.00	90°00'00"	N44°27'00"E	35.36
C45	39.27	25.00	90°00'00"	S45°33'00"E	35.36
C46	39.27	25.00	90°00'00"	S44°27'00"W	35.36
C47	39.27	25.00	90°00'00"	N45°33'00"W	35.36
C48	39.27	25.00	90°00'00"	S44°27'00"E	35.36
C49	39.27	25.00	90°00'00"	N45°33'00"W	35.36
C50	39.27	25.00	90°00'00"	N44°27'00"E	35.36
C51	39.27	25.00	90°00'00"	S45°33'00"E	35.36
C52	39.27	25.00	90°00'00"	S44°27'00"W	35.36
C53	39.27	25.00	90°00'00"	N45°33'00"W	35.36
C54	39.27	25.00	90°00'00"	N44°27'00"E	35.36
C55	39.27	25.00	90°00'00"	S45°33'00"E	35.36
C56	39.27	25.00	90°00'00"	S44°27'00"W	35.36
C57	39.27	25.00	90°00'00"	N45°33'00"W	35.36
C58	39.27	25.00	90°00'00"	N44°27'00"E	35.36
C59	39.27	25.00	90°00'00"	S45°33'00"E	35.36
C60	39.27	25.00	90°00'00"	S44°27'00"W	35.36
C61	39.27	25.00	90°00'00"	N45°33'00"W	35.36
C62	39.27	25.00	90°00'00"	N44°27'00"E	35.36
C63	39.27	25.00	90°00'00"	S45°33'00"E	35.36
C64	39.27	25.00	90°00'00"	N44°27'00"E	35.36
C65	24.74	50.00	28°21'14"	S76°22'23"E	24.49
C66	13.67	50.00	15°39'37"	N10°01'44"W	13.63
C67	35.05	50.00	40°10'41"	S82°02'48"E	34.25
C68	29.23	50.00	33°29'36"	S45°12'49"W	28.81
C69	33.56	50.00	38°27'02"	S09°14'30"W	32.93
C70	14.32	50.00	16°24'30"	S18°11'16"E	14.27
C71	22.55	50.00	25°50'31"	N13°28'15"W	22.36
C72	22.55	50.00	25°50'31"	N12°22'15"E	22.36
C73	14.32	50.00	16°24'30"	S17°03'15"W	14.27
C74	33.56	50.00	38°27'02"	S10°20'30"E	32.93
C75	29.23	50.00	33°29'36"	S46°18'49"E	28.81
C76	35.06	50.00	40°10'41"	S83°08'58"E	34.35
C77	13.67	50.00	15°39'37"	N68°25'44"E	13.63
C78	24.74	50.00	28°21'14"	S25°16'23"W	24.49
C79	39.27	25.00	90°00'00"	N45°33'00"W	35.36
C80	39.27	25.00	90°00'00"	N44°27'00"E	35.36
C81	11.61	50.00	14°18'29"	S83°53'46"E	11.59
C82	13.13	50.00	15°02'45"	S69°43'09"E	13.09
C83	34.51	50.00	39°32'49"	N81°28'10"W	33.83
C84	37.65	50.00	43°08'28"	S66°41'11"W	36.76
C85	40.07	50.00	45°50'26"	S12°11'14"W	38.96
C86	13.66	50.00	15°39'37"	S18°34'00"E	13.62
C87	22.55	50.00	25°50'31"	N13°28'15"W	22.36
C88	22.55	50.00	25°50'31"	N12°22'15"E	22.36
C89	13.66	50.00	15°39'37"	S17°28'00"W	13.62
C90	40.07	50.00	45°50'26"	S13°7'15"E	38.96
C91	37.65	50.00	43°08'28"	S12°42'11"E	36.76
C92	14.51	50.00	16°24'30"	N06°27'07"E	14.47
C93	13.13	50.00	15°02'45"	S46°17'09"W	13.09
C94	11.61	50.00	14°18'29"	S82°47'46"W	11.59
C95	39.27	25.00	90°00'00"	N45°33'00"W	35.36
C96	39.27	25.00	90°00'00"	N44°27'00"E	35.36
C97	39.27	25.00	90°00'00"	S45°33'00"E	35.36
C98	39.27	25.00	90°00'00"	S44°27'00"W	35.36
C99	39.27	25.00	90°00'00"	N45°33'00"W	35.36
C100	39.27	25.00	90°00'00"	N44°27'00"E	35.36



TYP. RECTANGULAR LOT LAYOUT
SCALE: 1" = 30'



TYP. CORNER LOT LAYOUT
SCALE: 1" = 30'



TYP. CUL-DE-SAC LOT LAYOUT
SCALE: 1" = 30'

- LEGEND**
- ⊕ CITY MONUMENT
 - PROPERTY LINE
 - CENTER LINE OF ROAD
 - EASEMENT LINE
 - OLD LOT LINE
 - 18 OLD LOT NUMBER
 - 3728 NEW LOT NUMBER & ADDRESS

DATE: _____

REVISION: _____

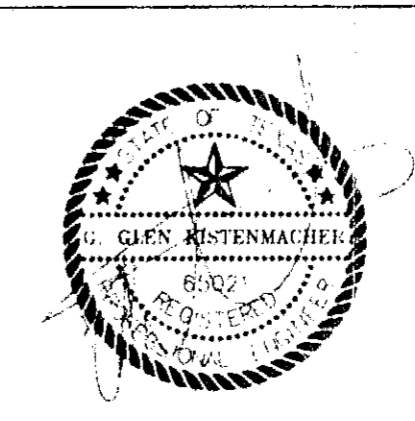
APPLICANT: _____

EXECUTIVE SIGNATURE: _____

CITY PLAN COMMISSION: _____

MAYOR: _____

Detailed Site Development Plan
Approved
Administrative
Modification
Department of Planning, Research
and Development
Date: Aug 8, 2003
Kristy Taylor
Director of Planning
or Appointed Representative



DATE	REVISION
7/2/02	RHT
7/17/02	RHT
4/1/03	JLC

DIMENSIONAL SITE PLAN

HUECO MOUNTAIN VILLAGE
HUECO MOUNTAIN VILLAGE - REPLAT "A"
CITY OF EL PASO
EL PASO COUNTY
TEXAS

DATE: AUGUST 30, 2000 SCALE: 1" = 100' DWG NAME: HMVA-DIMSITE

KISTENMACHER ENGINEERING COMPANY, INC.
CONSULTING ENGINEERING - LAND PLANNING - SURVEYING
1420 GERONIMO DRIVE, SUITE A2 - EL PASO, TEXAS 79925 - 915-778-4476

CHECKED BY: LA 1360
GGK SHEET 1.1
OF 34

DP-00012