

EDGEMONT SUBDIVISION – PHASE I

A 48.562 ACRE SUBDIVISION LOCATED WITHIN THE SANTA TERESA LAND GRANT
SECTION 16, T.28S., R.3E., N.M.P.M., OF THE U.S.G.L.O. SURVEYS
CITY OF SUNLAND PARK, DOÑA ANA COUNTY, NEW MEXICO
SCALE: 1" = 100'
FEBRUARY 26, 2008

DEDICATION

THE 48.562 ACRE TRACT OF LAND SHOWN HEREON IS TO BE KNOWN AS EDGEMONT SUBDIVISION – PHASE I.

ALL RIGHTS OF WAY SHOWN HEREON ARE DEDICATED TO THE CITY OF SUNLAND PARK. UTILITY EASEMENTS ARE GRANTED FOR THE USE OF THE UTILITY COMPANIES THAT ARE SIGNATORY TO THIS PLAT AND TO THE CITY OF SUNLAND PARK. ALL RULES AND REGULATIONS OF THE CITY OF SUNLAND PARK AND SAID UTILITY COMPANIES WILL APPLY TO THESE EASEMENTS. ALL OTHER EASEMENTS SHOWN HEREON ARE GRANTED FOR THE USE INDICATED. NO ENCROACHMENT THAT WILL INTERFERE WITH THE USE OF EASEMENTS AS SHOWN ON THIS PLAT WILL BE ALLOWED.

THIS SUBDIVISION HAS BEEN DEDICATED IN ACCORDANCE WITH THE WISHES OF THE UNDERSIGNED OWNER(S) OF THE LAND SHOWN HEREON.

INSTRUMENT OF OWNERSHIP: CLERKS BOOK 752, PAGES 433–438, (10/3/2006) DOÑA ANA COUNTY RECORDS.

I, THE UNDERSIGNED OWNER, HEREBY SET MY HAND AND SEAL THIS _____, DAY OF _____, 2008.

JACK WINTON
McNUTT PROPERTIES, LLC.
6300 ESCONDIDO
EL PASO, TEXAS 79912

STATE OF NEW MEXICO }
DOÑA ANA COUNTY }

THE FOREGOING INSTRUMENT WAS ACKNOWLEDGED BEFORE ME THIS _____, DAY OF _____, 2008.

BY _____

MY COMMISSION EXPIRES: _____

NOTARY PUBLIC _____ SEAL _____

COUNTY CLERK RECEPTION

PLAT NO. _____

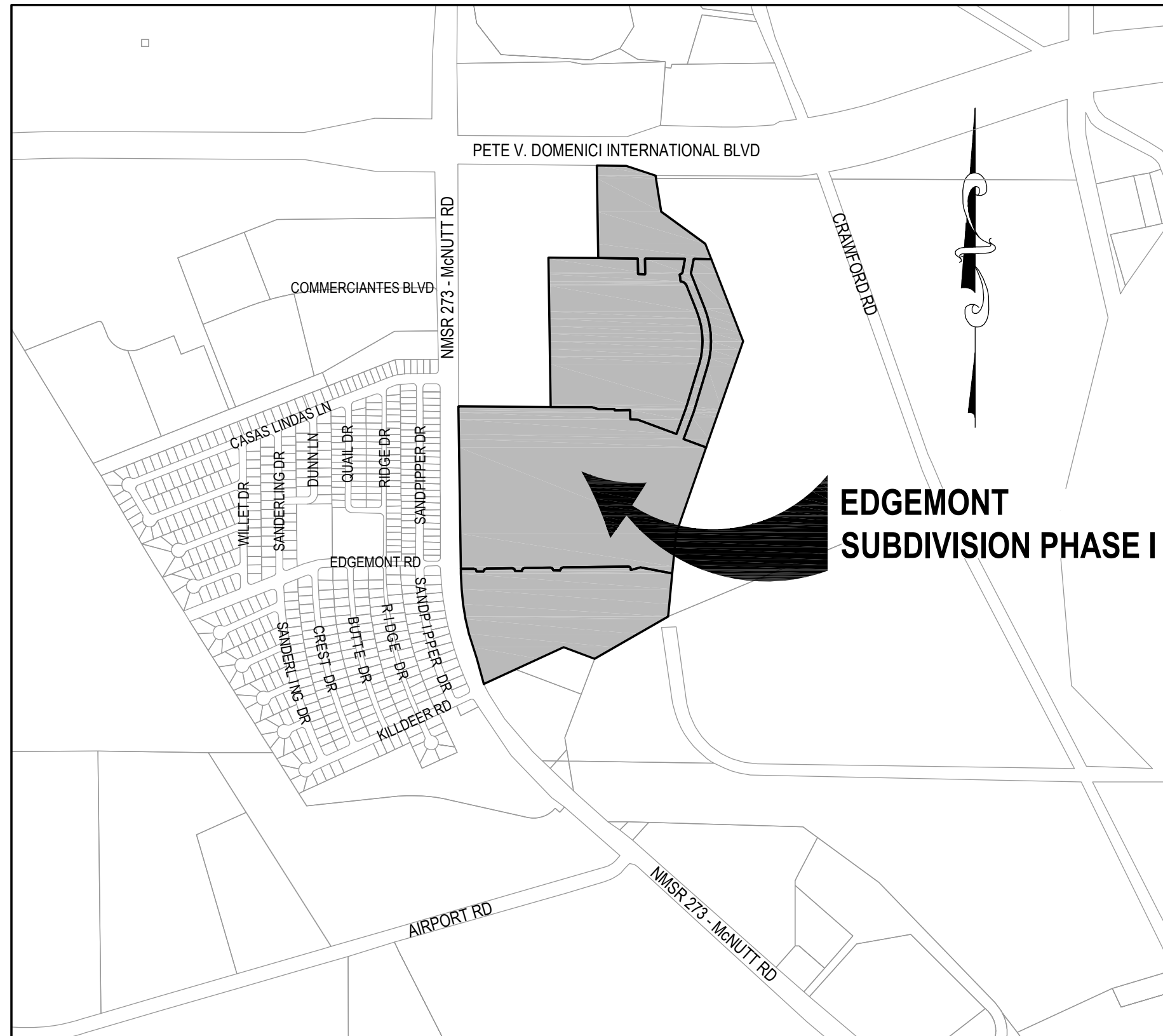
RECEPTION NO. _____

STATE OF NEW MEXICO }
DOÑA ANA COUNTY }

I HEREBY CERTIFY THAT THIS INSTRUMENT WAS FILED FOR RECORD THE _____ DAY OF _____, 2008, AT _____ O'CLOCK AND DULY RECORDED IN PLAT BOOK NO. _____, PAGE(S) _____, AND FILED IN THE RECORDS OF COUNTY CLERK, DOÑA ANA COUNTY, NEW MEXICO.

COUNTY CLERK _____ SEAL _____

DEPUTY CLERK _____ SEAL _____



VICINITY MAP

SECTION 16, T.28S., R.3E., SUNLAND PARK, DOÑA ANA COUNTY, NEW MEXICO

NOT TO SCALE

SURVEYOR'S CERTIFICATION

I, JUSTIN W. MILLER, A NEW MEXICO PROFESSIONAL SURVEYOR CERTIFY THAT I CONDUCTED AND AM RESPONSIBLE FOR THIS SURVEY, THAT THIS SURVEY IS TRUE AND CORRECT TO THE BEST OF MY KNOWLEDGE AND BELIEF, AND THAT THIS SURVEY AND PLAT MEET THE MINIMUM STANDARDS FOR SURVEYING IN NEW MEXICO.

JUSTIN W. MILLER, _____ DATE _____
PLS 17572

CITY PLANNING AND ZONING COMMISSION APPROVAL

THIS PLAT HAS BEEN APPROVED BY THE CITY OF SUNLAND PARK AND ALL THE REQUIREMENTS FOR ESTABLISHING GRADES, DRAINAGE AND UTILITIES IN THE ATTACHED SUBDIVISION HAVE BEEN COMPLIED WITH TO THE SATISFACTION OF THE CITY OF SUNLAND PARK APPROVED FOR FILING WITH THE COUNTY CLERK OF DOÑA ANA COUNTY, NEW MEXICO.

_____, MAYOR _____ DATE _____

_____, CITY CLERK _____ DATE _____

_____, PLANNING DEPARTMENT _____ DATE _____

UTILITY APPROVALS

NOTE: THIS PLAT HAS BEEN APPROVED FOR EASEMENT PURPOSES ONLY. THE SIGNING OF THIS PLAT DOES NOT IN ANY WAY GUARANTEE UTILITY SERVICE BY THE UNDERSIGNED COMPANIES TO THE DEDICATED PARCELS.

EL PASO ELECTRIC COMPANY

EASEMENTS SHOWN HEREON, COPIES OF WHICH HAVE BEEN PRESENTED TO EL PASO ELECTRIC COMPANY, ARE SATISFACTORY TO MEET THE NEED FOR INSTALLATION OF (UNDERGROUND ONLY) (OVERHEAD ONLY) (UNDERGROUND AND/OR OVERHEAD) (UNDERGROUND AND DESIGNATED OVERHEAD FEEDER) ELECTRICAL FACILITIES

BY _____ DATE _____

NEW MEXICO GAS COMPANY

EASEMENTS SHOWN HEREON ARE SATISFACTORY TO MEET THE NEED FOR INSTALLATION OF UNDERGROUND GAS UTILITIES.

BY _____ DATE _____

CITY OF SUNLAND PARK

EASEMENTS SHOWN HEREON ARE SATISFACTORY TO MEET THE NEED FOR INSTALLATION OF UNDERGROUND WATER AND SEWER UTILITIES.

BY _____ DATE _____

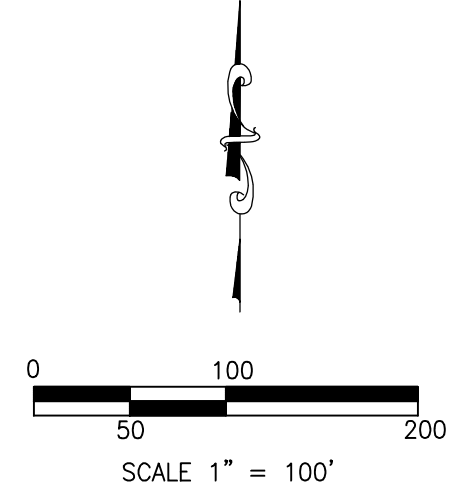
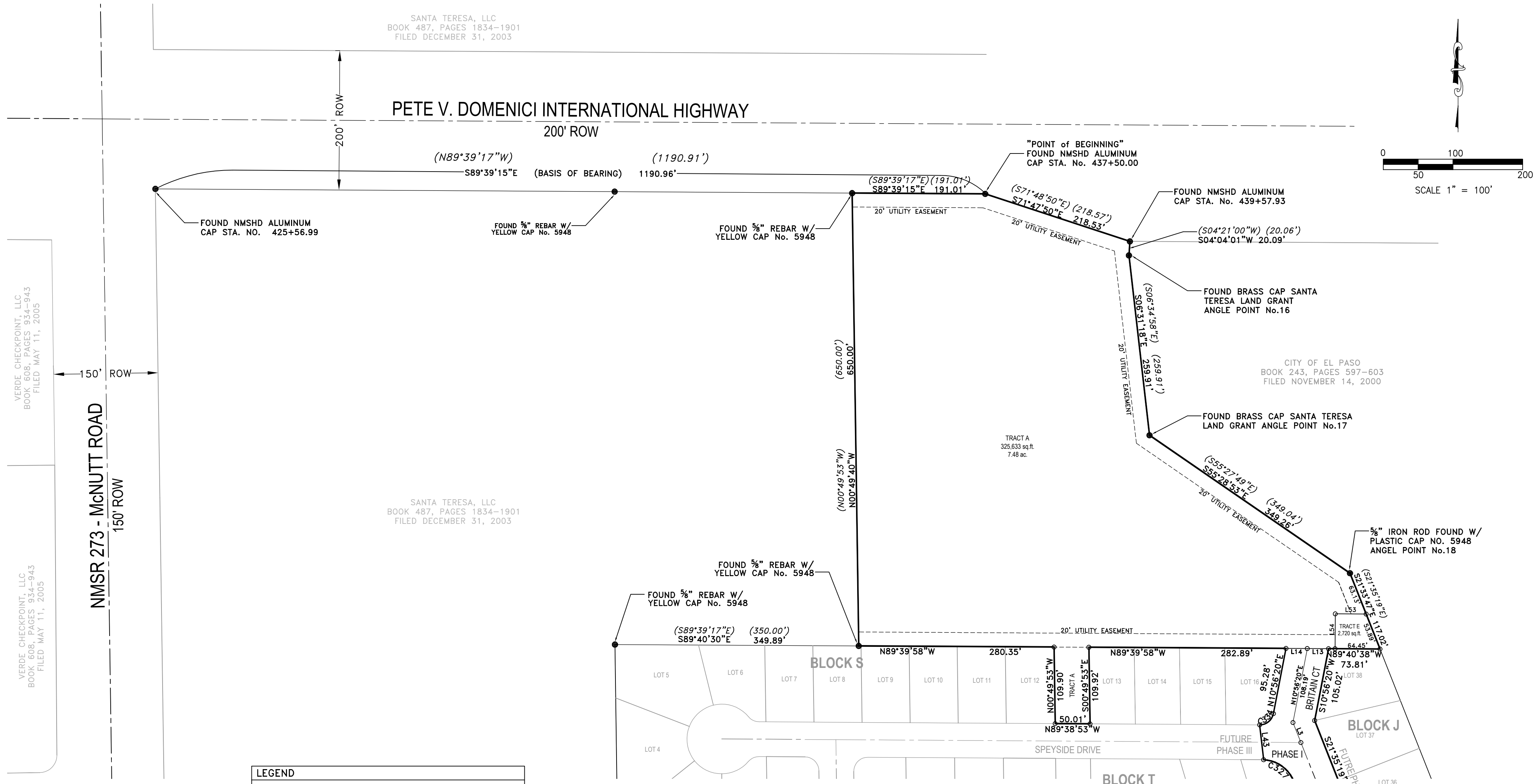


SUMMIT ENGINEERING

CIVIL ENGINEERING –DESIGN –CONSULTING
PO BOX 375 FAIRACRES, NM 88033 (505) 527-5321

EDGEMONT SUBDIVISION – PHASE I

A 48.562 ACRE SUBDIVISION LOCATED WITHIN THE SANTA TERESA LAND GRANT
SECTION 16, T.28S., R.3E., N.M.P.M., OF THE U.S.G.L.O. SURVEYS
CITY OF SUNLAND PARK, DOÑA ANA COUNTY, NEW MEXICO
SCALE: 1" = 100'
FEBRUARY 26, 2008



LEGEND	
FEMA FLOOD ZONE 'A'	---
U.S.G.L.O. BRAS CAP	⊕
FOUND MONUMENT (AS DESCRIBED)	●
SET 1/2" REBAR W/ CAP MARKED PS 17572	○
MEASURED BEARING	S33°00'56"W
RECORD BEARING	(S33°00'56"W)
MATCHLINE	

VERDE CHECKPOINT, LLC
BOOK 608, PAGES 934-943
FILED MAY 11, 2005

VERDE CHECKPOINT, LLC
BOOK 608, PAGES 934-943
FILED MAY 11, 2005

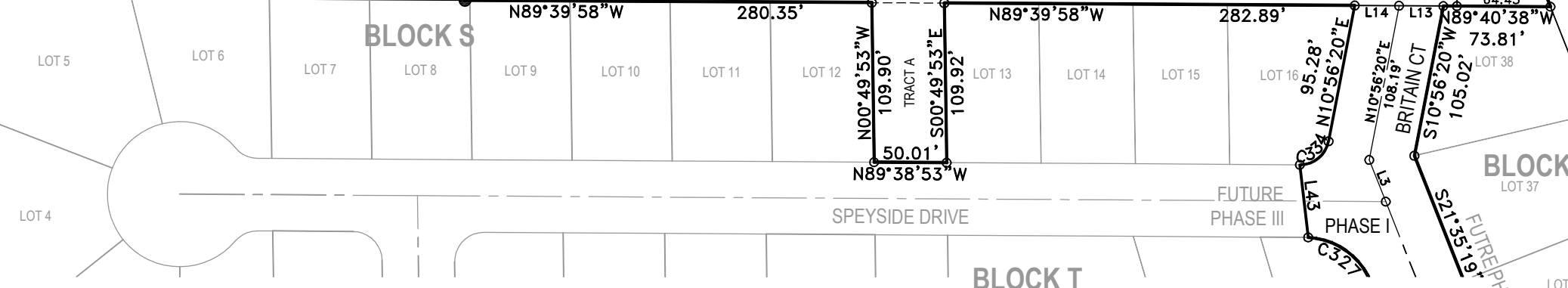
NMSR 273 - McNUTT ROAD
150' ROW

SANTA TERESA, LLC
BOOK 487, PAGES 1834-1901
FILED DECEMBER 31, 2003

SANTA TERESA, LLC
BOOK 487, PAGES 1834-1901
FILED DECEMBER 31, 2003

TRACT A
325,633 sq.ft.
7.48 ac.

CITY OF EL PASO
BOOK 243, PAGES 597-603
FILED NOVEMBER 14, 2000



EDGEMONT SUBDIVISION – PHASE I

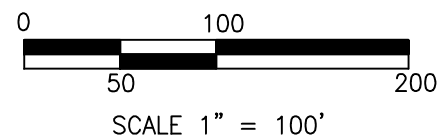
A 48.562 ACRE SUBDIVISION LOCATED WITHIN THE SANTA TERESA LAND GRANT
SECTION 16, T.28S., R.3E., N.M.P.M., OF THE U.S.G.L.O. SURVEYS
CITY OF SUNLAND PARK, DOÑA ANA COUNTY, NEW MEXICO
SCALE: 1" = 100'
FEBRUARY 26, 2008

CASAS LINDAS SUBDIVISION
PLAT NO. 1565
BOOK 14, PAGES 337-338
FILED FEBRUARY 27, 1987

CASAS LINDAS SUBDIVISION
PLAT NO. 1565
BOOK 14, PAGES 337-338
FILED FEBRUARY 27, 1987



CITY OF EL PASO
BOOK 243, PAGES 597-603
FILED NOVEMBER 14, 2000



LEGEND	
FEMA FLOOD ZONE 'A'	---
U.S.G.L.O. BRAS CAP	+
FOUND MONUMENT (AS DESCRIBED)	•
SET 1/2" REBAR W/ CAP MARKED PS 17572	o
MEASURED BEARING	S33°00'56"W
RECORD BEARING	(S33°00'56"W)
MATCHLINE	---

