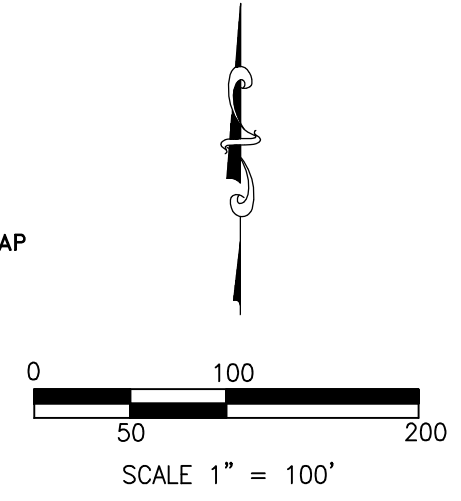
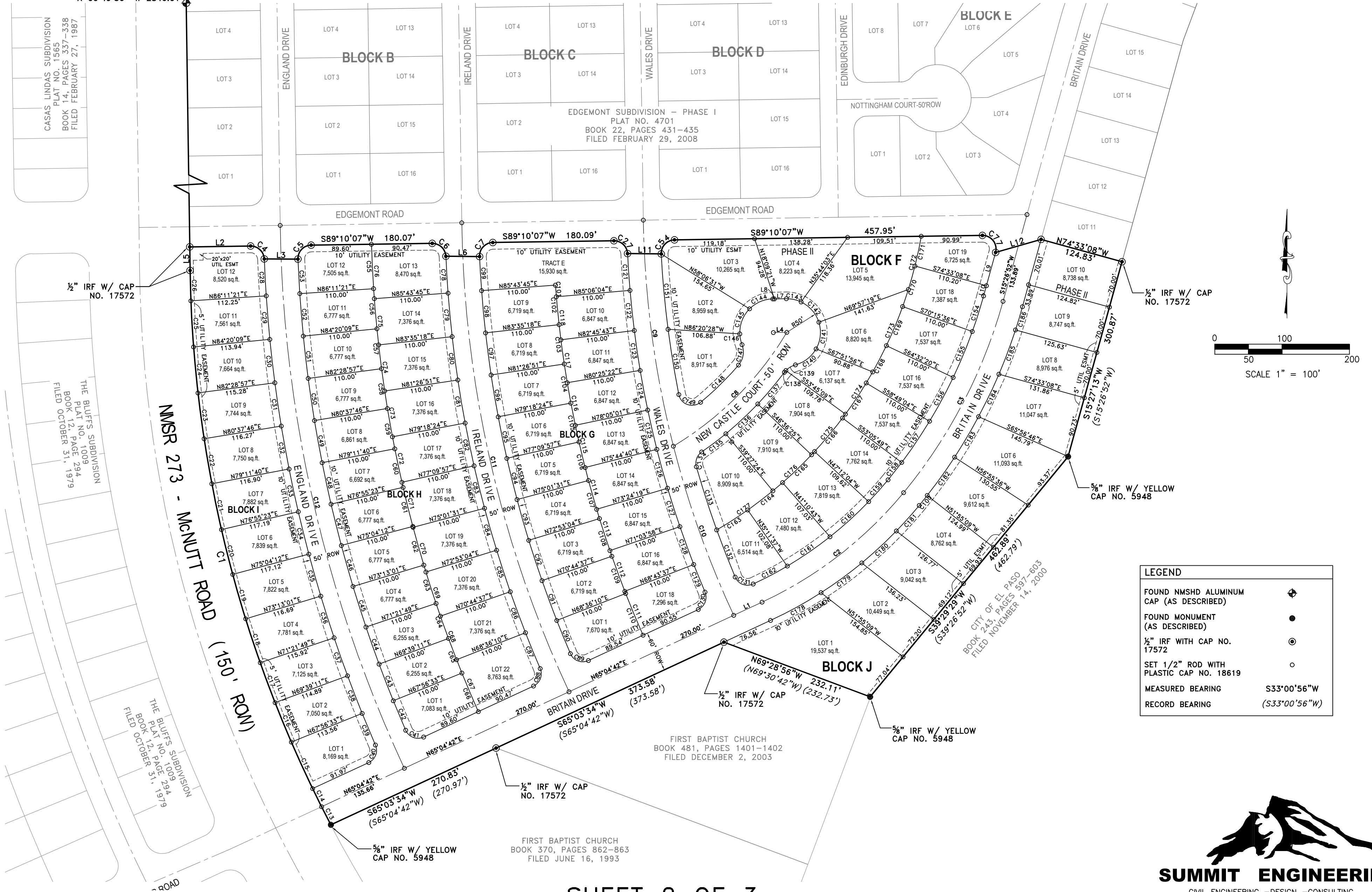


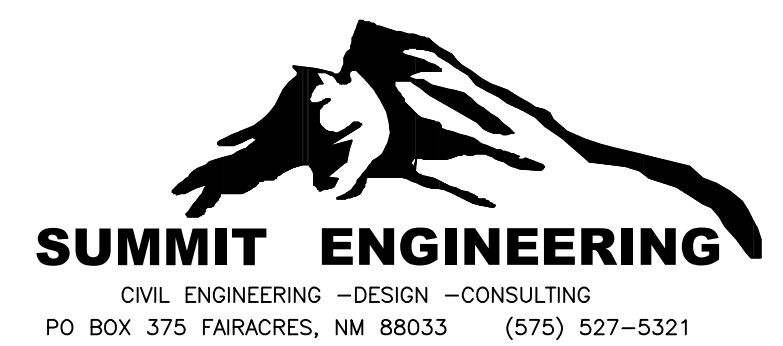
EDGEMONT SUBDIVISION – PHASE II

A 19.051 ACRE SUBDIVISION LOCATED WITHIN THE SANTA TERESA LAND GRANT
SECTION 16, T.28S., R.3E., N.M.P.M., OF THE U.S.G.L.O. SURVEYS
CITY OF SUNLAND PARK, DOÑA ANA COUNTY, NEW MEXICO
SCALE: 1" = 100'
OCTOBER 13, 2008

TIE TO NMSHD ALUMINUM
CAP STA. NO. 425+56.99
N 00°49'56" W 2846.01'



LEGEND	
FOUND NMSHD ALUMINUM CAP (AS DESCRIBED)	⊕
FOUND MONUMENT (AS DESCRIBED)	●
1/2" IRF WITH CAP NO. 17572	⊙
SET 1/2" ROD WITH PLASTIC CAP NO. 18619	○
MEASURED BEARING	S33°00'56"W
RECORD BEARING	(S33°00'56"W)



EDGEMONT SUBDIVISION – PHASE II

A 19.051 ACRE SUBDIVISION LOCATED WITHIN THE SANTA TERESA LAND GRANT
SECTION 16, T.28S., R.3E., N.M.P.M., OF THE U.S.G.L.O. SURVEYS
CITY OF SUNLAND PARK, DOÑA ANA COUNTY, NEW MEXICO
SCALE: 1" = 100'
OCTOBER 13, 2008

CURVE TABLE					
CURVE	LENGTH	RADIUS	CHORD BEARING	CH LENGTH	DELTA
C1	858.65'	1834.86'	S14°14'47"E	850.83'	26°48'44"
C2	268.39'	599.98'	N52°15'47"E	266.16'	25°37'50"
C3	323.04'	771.20'	N27°26'52"E	320.68'	24°00'00"
C4	30.92'	20.00'	N46°32'14"W	27.93'	88°35'18"
C5	31.92'	20.00'	S43°26'40"W	28.64'	91°26'55"
C6	30.85'	20.00'	N46°38'44"W	27.88'	88°22'19"
C7	32.01'	20.00'	S43°18'38"W	28.70'	91°42'57"
C8	241.41'	491.20'	N44°53'11"E	238.98'	28°09'32"
C9	339.99'	1444.76'	S07°34'22"E	339.20'	13°28'59"
C10	267.47'	1444.79'	S19°37'05"E	267.09'	10°36'25"
C11	720.98'	1714.76'	S12°52'35"E	715.68'	24°05'25"
C12	834.50'	1984.76'	S12°52'35"E	828.37'	24°05'25"
C13	30.27'	1834.86'	S27°10'48"E	30.27'	0°56'42"
C14	30.01'	1834.86'	S26°14'20"E	30.01'	0°56'13"
C15	76.11'	1834.86'	S24°34'55"E	76.10'	2°22'35"
C16	63.43'	1834.86'	S22°24'13"E	63.42'	1°58'50"
C17	63.46'	1834.86'	S20°25'21"E	63.45'	1°58'53"
C18	68.77'	1834.86'	S18°21'29"E	68.77'	2°08'51"
C19	68.79'	1834.86'	S16°12'37"E	68.78'	2°08'53"
C20	68.79'	1834.86'	S14°03'44"E	68.79'	2°08'53"
C21	69.64'	1834.86'	S11°45'03"E	69.64'	2°10'29"
C22	67.92'	1834.86'	S09°45'11"E	67.92'	2°07'16"
C23	68.76'	1834.86'	S07°37'08"E	68.75'	2°08'49"
C24	68.72'	1834.86'	S05°28'21"E	68.72'	2°08'46"
C25	68.69'	1834.86'	S03°19'37"E	68.69'	2°08'42"
C26	45.29'	1834.86'	S01°32'51"E	45.29'	1°23'52"
C27	30.74'	20.00'	N46°47'35"W	27.81'	88°04'36"
C28	55.00'	2009.76'	S03°01'37"E	55.00'	1°34'05"
C29	65.01'	2009.76'	S04°44'15"E	65.01'	1°51'12"
C30	65.00'	2009.76'	S06°35'27"E	65.00'	1°51'11"
C31	65.00'	2009.76'	S08°26'38"E	65.00'	1°51'11"
C32	65.00'	2009.76'	S10°17'50"E	65.00'	1°51'11"
C33	65.00'	2009.76'	S12°09'01"E	65.00'	1°51'11"
C34	65.00'	2009.76'	S14°00'12"E	65.00'	1°51'11"
C35	65.00'	2009.76'	S15°51'24"E	65.00'	1°51'11"
C36	65.00'	2009.76'	S17°42'35"E	65.00'	1°51'11"
C37	60.00'	2009.76'	S19°29'30"E	60.00'	1°42'38"
C38	60.00'	2009.76'	S21°12'08"E	60.00'	1°42'38"
C39	50.95'	2009.76'	S22°47'02"E	50.95'	1°27'09"
C40	30.92'	20.00'	N20°47'03"E	27.93'	88°35'18"
C41	31.93'	20.00'	S69°10'59"E	28.65'	91°28'37"
C42	47.45'	1959.76'	S22°45'04"E	47.44'	1°23'14"
C43	58.51'	1959.76'	S21°12'08"E	58.51'	1°42'38"
C44	58.51'	1959.76'	S19°29'30"E	58.51'	1°42'38"
C45	63.39'	1959.76'	S17°42'35"E	63.38'	1°51'11"
C46	63.39'	1959.76'	S15°51'24"E	63.38'	1°51'11"
C47	63.39'	1959.76'	S14°00'12"E	63.38'	1°51'11"
C48	63.02'	1959.76'	S12°09'20"E	63.02'	1°50'33"
C49	63.75'	1959.76'	S10°18'09"E	63.75'	1°51'50"
C50	63.39'	1959.76'	S08°26'38"E	63.38'	1°51'11"
C51	63.39'	1959.76'	S06°35'27"E	63.38'	1°51'11"
C52	63.39'	1959.76'	S04°44'15"E	63.39'	1°51'12"
C53	51.40'	1959.76'	S03°03'34"E	51.40'	1°30'10"
C54	32.00'	20.01'	S43°19'16"W	28.70'	91°38'49"
C55	66.19'	1849.76'	S02°47'09"E	66.19'	2°03'01"
C56	59.83'	1849.76'	S04°44'15"E	59.83'	1°51'12"
C57	59.83'	1849.76'	S06°35'27"E	59.83'	1°51'11"
C58	59.83'	1849.76'	S08°26'38"E	59.83'	1°51'11"
C59	61.00'	1849.76'	S10°18'55"E	60.99'	1°53'22"
C60	58.66'	1849.76'	S12°10'06"E	58.66'	1°49'01"
C61	59.83'	1849.76'	S14°00'12"E	59.83'	1°51'11"

CURVE TABLE					
CURVE	LENGTH	RADIUS	CHORD BEARING	CH LENGTH	DELTA
C62	59.83'	1849.76'	S15°51'24"E	59.83'	1°51'11"
C63	59.83'	1849.76'	S17°42'35"E	59.83'	1°51'11"
C64	55.23'	1849.76'	S19°29'30"E	55.22'	1°42'38"
C65	55.23'	1849.76'	S21°12'08"E	55.22'	1°42'38"
C66	62.47'	1849.76'	S23°01'30"E	62.46'	1°56'06"
C67	83.79'	1849.76'	S22°41'41"E	83.78'	2°35'43"
C68	69.11'	1849.76'	S20°19'36"E	69.11'	2°08'27"
C69	69.11'	1849.76'	S18°11'10"E	69.11'	2°08'27"
C70	69.11'	1849.76'	S16°02'43"E	69.11'	2°08'27"
C71	69.11'	1849.76'	S13°54'16"E	69.11'	2°08'27"
C72	69.11'	1849.76'	S11°45'49"E	69.11'	2°08'27"
C73	69.11'	1849.76'	S09°37'22"E	69.11'	2°08'27"
C74	69.11'	1849.76'	S07°28'56"E	69.11'	2°08'27"
C75	69.11'	1849.76'	S05°20'29"E	69.11'	2°08'27"
C76	81.04'	1849.76'	S03°00'57"E	81.04'	2°30'37"
C77	37.09'	20.00'	N37°42'16"W	32.00'	106°15'15"
C78	55.00'	1739.76'	S03°21'55"E	55.00'	1°48'41"
C79	65.00'	1739.76'	S05°20'29"E	65.00'	2°08'27"
C80	65.00'	1739.76'	S07°28'56"E	65.00'	2°08'27"
C81	65.00'	1739.76'	S09°37'22"E	65.00'	2°08'27"
C82	65.00'	1739.76'	S11°45'49"E	65.00'	2°08'27"
C83	65.00'	1739.76'	S13°54'16"E	65.00'	2°08'27"
C84	65.00'	1739.76'	S16°02'43"E	65.00'	2°08'27"
C85	65.00'	1739.76'	S18°11'10"E	65.00'	2°08'27"
C86	65.00'	1739.76'	S20°19'36"E	65.00'	2°08'27"
C87	57.58'	1739.76'	S22°20'43"E	57.58'	1°53'47"
C88	30.85'	20.00'	N20°53'33"E	27.88'	88°22'19"
C89	32.01'	20.00'	S69°03'49"E	28.70'	91°42'57"
C90	53.34'	1689.76'	S22°18'05"E	53.34'	1°48'31"
C91	63.14'	1689.76'	S20°19'36"E	63.13'	2°08'27"
C92	63.14'	1689.76'	S18°11'10"E	63.13'	2°08'27"
C93	63.14'	1689.76'	S16°02'43"E	63.13'	2°08'27"
C94	63.14'	1689.76'	S13°54'16"E	63.13'	2°08'27"
C95	63.14'	1689.76'	S11°45'49"E	63.13'	2°08'27"
C96	63.14'	1689.76'	S09°37'22"E	63.13'	2°08'27"
C97	63.14'	1689.76'	S07°28'56"E	63.13'	2°08'27"
C98	63.14'	1689.76'	S05°20'29"E	63.13'	2°08'27"
C99	50.83'	1689.76'	S03°24'33"E	50.83'	1°43'25"
C100	19.11'	801.20'	N38°45'52"E	19.11'	1°22'01"
C101	17.31'	1579.76'	S04°35'06"E	17.31'	0°37'41"
C102	59.03'	1579.76'	S05°20'29"E	59.02'	2°08'27"
C103	59.03'	1579.76'	S07°28'56"E	59.02'	2°08'27"
C104	59.03'	1579.76'	S09°37'22"E	59.02'	2°08'27"
C105	59.03'	1579.76'	S11°45'49"E	59.02'	2°08'27"
C106	59.03'	1579.76'	S13°54'16"E	59.02'	2°08'27"
C107	59.03'	1579.76'	S16°02'43"E	59.02'	2°08'27"
C108	59.03'	1579.76'	S18°11'10"E	59.02'	2°08'27"
C109	59.03'	1579.76'	S20°19'36"E	59.02'	2°08'27"
C110	67.18'	1579.76'	S22°36'55"E	67.17'	2°26'11"
C111	70.60'	1579.76'	S22°33'12"E	70.60'	2°33'38"
C112	64.50'	1579.76'	S20°06'12"E	64.49'	2°20'21"
C113	64.50'	1579.76'	S17°45'51"E	64.49'	2°20'21"
C114	64.50'	1579.76'	S15°25'30"E	64.49'	2°20'21"
C115	64.50'	1579.76'	S13°05'09"E	64.49'	2°20'21"
C116	64.50'	1579.76'	S10°44'48"E	64.49'	2°20'21"
C117	64.50'	1579.76'	S08°24'27"E	64.49'	2°20'21"
C118	64.50'	1579.76'	S06°04'07"E	64.49'	2°20'21"
C121	55.00'	1469.76'	S03°49'36"E	55.00'	2°08'39"
C122	60.00'	1469.76'	S06°04'07"E	60.00'	2°20'21"
C123	60.00'	1469.76'	S08°24'27"E	60.00'	2°20'21"
C124	60.00'	1469.76'	S10°44'48"E	60.00'	2°20'21"

CURVE TABLE					
CURVE	LENGTH	RADIUS	CHORD BEARING	CH LENGTH	DELTA
C125	60.00'	1469.76'	S13°05'09"E	60.00'	2°20'21"
C126	60.00'	1469.76'	S15°25'30"E	60.00'	2°20'21"
C127	60.00'	1469.76'	S17°45'51"E	60.00'	2°20'21"
C128	60.00'	1469.76'	S20°06'12"E	60.00'	2°20'21"
C129	44.26'	1469.76'	S22°08'08"E	44.26'	1°43'31"
C130	30.74'	20.00'	N21°02'24"E	27.81'	88°04'36"
C131	32.11'	20.00'	S68°52'09"E	28.77'	91°59'22"
C132	75.28'	1419.76'	S21°21'20"E	75.27'	3°02'17"
C133	98.79'	1419.76'	S17°50'35"E	98.77'	3°59'13"
C134	24.90'	20.00'	S19°49'17"W	23.33'	71°20'31"
C135	45.02'	521.20'	N53°01'04"E	45.01'	4°56'56"
C136	65.04'	521.20'	N46°58'05"E	65.00'	7°09'01"
C137	61.47'	521.20'	N40°00'53"E	61.43'	6°45'25"
C138	3.54'	30.00'	S40°01'15"W	3.54'	6°46'11"
C139	16.66'	30.00'	S59°18'37"W	16.44'	31°48'34"
C140	39.84'	50.00'	N52°23'26"E	38.79'	45°38'57"
C141	41.19'	50.00'	N05°57'52"E	40.04'	47°12'12"
C142	41.18'	50.00'	N41°13'52"W	40.03'	47°11'17"
C143	22.69'	50.00'	N77°49'42"W	22.50'	26°00'24"
C144	38.57'	50.00'	S67°00'15"W	37.62'	44°11'57"
C145	41.15'	50.00'	S21°19'35"W	40.00'	47°09'23"
C146	16.50'	50.00'	S11°42'29"E	16.43'	18°54'47"
C147	32.35'	30.00'	N09°43'44"E	30.81'	61°47'13"
C148	79.07'	461.20'	N45°32'02"E	78.97'	9°49'23"
C149	41.25'	20.00'	S70°28'25"E	34.32'	118°09'44"
C150	98.47'	1419.69'	S09°24'20"E	98.45'	3°58'26"
C151	112.63'	1419.69'	S05°08'45"E	112.60'	4°32'44"
C154	55.52'	741.20'	N17°35'38"E	55.51'	4°17'31"
C155	74.01'	741.20'	N22°36'02"E	73.98'	5°43'16"
C156	74.01'	741.20'	N28°19'18"E	73.98'	5°43'16"
C157	74.01'	741.20'	N34°02'33"E	73.98'	5°43'16"
C158	32.92'	741.20'	N38°10'32"E	32.92'	2°32'41"
C159	43.35'	569.98'	N41°37'36"E	43.33'	4°21'26"
C160	77.80'	569.98'	N47°42'55"E	77.74'	7°49'14"
C161	77.04'	569.98'	N55°29'52"E	76.98'	7°44'39"
C162	57.36'	569.98'	N62°15'10"E	57.34'	5°45'59"
C163	54.87'	631.20'	N57°17'49"E	54.86'	4°58'52"
C164	65.93'	631.20'	N51°48'50"E	65.90'	5°59'06"
C165	66.34'	631.20'	N45°48'37"E	66.31'	6°01'20"
C166	64.95'	631.20'	N39°51'04"E	64.92'	5°53'45"
C167	63.03'	631.20'	N34°02'33"E	63.00'	5°43'16"
C168	63.03'	631.20'	N28°19'18"E	63.00'	5°43'16"
C169	63.03'	631.20'	N22°36'02"E	63.00'	5°43'16"
C170	63.03'	631.20'	N16°52'46"E	63.00'	5°43'16"
C171	45.24'	631.20'	N11°57'55"E	45.23'	4°06'25"
C172	81.57'	631.20'	N13°36'50"E	81.51'	7°24'15"
C173					